

 **BOEING**  
COMPONENT  
MAINTENANCE MANUAL

TO: ALL HOLDERS OF OUTBOARD TRAILING EDGE FLAP NUMBER ONE MID FAIRING  
ASSEMBLY COMPONENT MAINTENANCE MANUAL, 57-26-31

REVISION NO. 8 DATED NOV 01/02

HIGHLIGHTS

Pages which have been added or revised are outlined below together with the highlights of the revision. Remove and insert the affected pages as listed and enter Revision No. and date on the Record of Revision Sheet.

CHAPTER/SECTION

AND PAGE NO.

DESCRIPTION OF CHANGE

TITLE PAGE

Added top assemblies, -41 thru -44; -45G, and -46G.

1

501

REPAIR 3-1

601

1003-1013, 1019-1037,

1043-1053

REPAIR 1-1

602-603

Added detail for link fitting 113T1830-5, -6 to  
REPAIR 1-1, Fig. 601.

REPAIR 2-1

601

Revised the refinish requirements for fitting  
113T1833-( ) to omit primer from the bearing holes.

REPAIR 2-1

601

Deleted hinge fitting assembly P/N 113T1833-24, -30,  
-41 and -42 from REPAIR 2-1.

REPAIR 3-1

602-603

703

1018

Edited without technical change.

1002

Added note for color-coded parts.

**57-26-31**

HIGHLIGHTS

01.1

Page 1

Nov 01/02

# OUTBOARD TRAILING EDGE FLAP NUMBER ONE MID FAIRING ASSEMBLY

PART NUMBERS 113T1821-29SP,-30SP,-31,-32,  
-35SP,-36SP,-37,-38,  
-39SP,-40SP, -41 THRU  
-44,-45G,-46G

COMPONENT MAINTENANCE MANUAL  
WITH  
ILLUSTRATED PARTS LIST

**57-26-31**

TITLE PAGE

Page 1

Nov 01/02

01.1



REVISION RECORD

- Retain this record in front of manual. On receipt of revision, insert revised pages in the manual, and enter revision number, date inserted and initial.

REVISION NUMBER	REVISION DATE	DATE FILED	BY	REVISION NUMBER	REVISION DATE	DATE FILED	BY

**57-26-31**

REVISION RECORD

01

Page 1

Jul 10/83



TEMPORARY REVISION AND SERVICE BULLETIN RECORD

BOEING SERVICE BULLETIN	BOEING TEMPORARY REVISION	OTHER DIRECTIVE	DATE OF INCORPORATION INTO MANUAL
		PRR B10467 PRR B11016 PRR B11382-3	OCT 10/83 JAN 10/85 APR 01/88

**57-26-31**

TR & SB RECORD

01.1

Page 1

Apr 01/88


**BOEING**  
 COMPONENT  
 MAINTENANCE MANUAL

PAGE	DATE	CODE	PAGE	DATE	CODE
57-26-31			REPAIR-GENERAL		
TITLE PAGE			601	JUL 01/98	01.1
*1	NOV 01/02	01.1	602	JUL 01/98	01.1
2	BLANK		603	JUL 01/98	01.101
REVISION RECORD			604	BLANK	
1	JUL 10/83	01	REPAIR 1-1		
2	BLANK		*601	NOV 01/02	01.101
TR & SB RECORD			*602	NOV 01/02	01.1
1	APR 01/88	01.1	*603	NOV 01/02	01.1
2	BLANK		*604	BLANK	
LIST OF EFFECTIVE PAGES			REPAIR 2-1		
*1	NOV 01/02	01	*601	NOV 01/02	01.1
THRU LAST PAGE			602	BLANK	
CONTENTS			REPAIR 3-1		
1	OCT 10/83	01.1	*601	NOV 01/02	01.1
2	BLANK		*602	NOV 01/02	01.1
INTRODUCTION			*603	NOV 01/02	01.1
1	JUL 10/87	01.1	*604	NOV 01/02	01.101
2	BLANK		ASSEMBLY		
DESCRIPTION & OPERATION			701	JUL 01/98	01.1
1	JAN 10/85	01.1	702	JUL 01/98	01.1
2	BLANK		*703	NOV 01/02	01.1
DISASSEMBLY			704	BLANK	
301	APR 01/88	01.1	ILLUSTRATED PARTS LIST		
302	BLANK		1001	JUL 10/83	01
CLEANING			*1002	NOV 01/02	01.1
401	JUL 01/98	01.1	*1003	NOV 01/02	01.1
402	BLANK		*1004	NOV 01/02	01.1
CHECK			*1005	NOV 01/02	01.1
*501	NOV 01/02	01.1	*1006	NOV 01/02	01.1
502	BLANK		*1007	NOV 01/02	01.1
			*1008	NOV 01/02	01.1
			*1009	NOV 01/02	01.1
			*1010	NOV 01/02	01.1
			*1011	NOV 01/02	01.1
			*1012	NOV 01/02	01.1
			*1013	NOV 01/02	01.1
			*1014	BLANK	

\* = REVISED, ADDED OR DELETED

**57-26-31**EFFECTIVE PAGES  
CONTINUED Page 1  
01 Nov 01/02

PAGE	DATE	CODE	PAGE	DATE	CODE
ILLUSTRATED PARTS LIST		CONT.			
*1015	NOV 01/02	01.1			
*1016	NOV 01/02	01.1			
*1017	NOV 01/02	01.1			
*1018	NOV 01/02	01.1			
*1019	NOV 01/02	01.1			
*1020	NOV 01/02	01.1			
*1021	NOV 01/02	01.1			
*1022	NOV 01/02	01.1			
*1023	NOV 01/02	01.1			
*1024	NOV 01/02	01.1			
*1025	NOV 01/02	01.1			
*1026	NOV 01/02	01.1			
*1027	NOV 01/02	01.1			
*1028	NOV 01/02	01.1			
*1029	NOV 01/02	01.1			
*1030	NOV 01/02	01.1			
*1031	NOV 01/02	01.1			
*1032	NOV 01/02	01.1			
*1033	NOV 01/02	01.1			
*1034	NOV 01/02	01.1			
*1035	NOV 01/02	01.1			
*1036	NOV 01/02	01.1			
*1037	NOV 01/02	01.1			
1038	BLANK				
*1039	NOV 01/02	01.1			
*1040	NOV 01/02	01.1			
*1041	NOV 01/02	01.1			
*1042	NOV 01/02	01.1			
*1043	NOV 01/02	01.1			
*1044	NOV 01/02	01.1			
*1045	NOV 01/02	01.1			
*1046	NOV 01/02	01.1			
*1047	NOV 01/02	01.1			
*1048	NOV 01/02	01.1			
*1049	NOV 01/02	01.1			
*1050	NOV 01/02	01.1			
*1051	NOV 01/02	01.1			
*1052	NOV 01/02	01.1			
*1053	NOV 01/02	01.1			
*1054	BLANK				

\* = REVISED, ADDED OR DELETED

# 57-26-31

EFFECTIVE PAGES  
 LAST PAGE Page 2  
 01 Nov 01/02



TABLE OF CONTENTS

<u>Paragraph Title</u>	<u>Page</u>
Description and Operation. . . . .	1
Testing/Trouble Shooting (Not Applicable)	
Disassembly. . . . .	301
Cleaning . . . . .	401
Check. . . . .	501
Repair . . . . .	601
Assembly . . . . .	701
Fits and Clearances (Not Applicable)	
Special Tools (Not Applicable)	
Illustrated Parts List . . . . .	1001

**57-26-31**

CONTENTS

Page 1

Oct 10/83

01.1



## INTRODUCTION

The instructions in this manual provide the information necessary to perform maintenance functions ranging from simple checks and replacement to complete shop-type repair.

This manual is divided into separate sections:

- |                                                    |                              |
|----------------------------------------------------|------------------------------|
| 1. Title Page                                      | 4. List of Effective Pages   |
| 2. Record of Revisions                             | 5. Table of Contents         |
| 3. Temporary Revision &<br>Service Bulletin Record | 6. Introduction              |
|                                                    | 7. Procedures & IPL Sections |

Refer to the Table of Contents for the page location of applicable sections. An asterisked flagnote \*[ ] in place of the page number indicates that no special instructions are provided since the function can be performed using standard industry practices.

The beginning of the REPAIR section includes a list of the separate repairs, a list of applicable standard Boeing practices, and an explanation of the True Position Dimensioning symbols used.

An explanation of the use of the Illustrated Parts List is provided in the Introduction to that section.

All weights and measurements used in the manual are in English units, unless otherwise stated. When metric equivalents are given they will be in parentheses following the English units.

Design changes, optional parts, configuration differences and Service Bulletin modifications create alternate part numbers. These are identified in the Illustrated Parts List (IPL) by adding an alphabetical character to the basic item number. The resulting item number is called an alpha-variant. Throughout the manual, IPL basic item number references also apply to alpha-variants unless otherwise indicated.

Verification:

| Assembly: August 30, 1986

**57-26-31**

INTRODUCTION

01.1

Page 1

Jul 10/87





OUTBOARD TRAILING EDGE FLAP NUMBER ONE MID FAIRING ASSEMBLY

DESCRIPTION AND OPERATION

1. Description

A. The outboard trailing edge flap number 1 mid fairing assembly provides a movable aerodynamic cover for the flap extending mechanism and provides a mid section for the stationary fore and aft sections.

2. Operation

A. The number one mid fairing assembly tilts downward with the flap extending mechanism when the flaps are extended.

3. Leading Particulars (Approximate)

A. Length -- 36 inches

B. Height -- 10 inches

C. Width -- 20 inches

D. Weight -- 8 pounds

57-26-31

DESCRIPTION & OPERATION

01.1

Page 1

Jan 10/85



### DISASSEMBLY

NOTE: Disassemble this component only as necessary to complete fault isolation, determine the serviceability of parts, perform required repairs and restore the unit to serviceable condition.

1. Disassemble this component using standard industry practices.
2. Record location and thickness of shims (177, 179, 285, IPL Fig. 1); (270, 275, 395, IPL Fig. 2) for reference during assembly.
3. If removal of fittings (210, 212, 213, IPL Fig. 1); (300, 305, 310, IPL Fig. 2) is necessary, refer to 20-10-08 to prevent damage to bond assembly (305A, IPL Fig. 1); (420, IPL Fig. 2).

# 57-26-31

DISASSEMBLY

01.1

Page 301

Apr 01/88



CLEANING

CAUTION: DO NOT VAPOR DEGREASE GRAPHITE/ARAMID EPOXY STRUCTURES WITH CHLORINATED CLEANING AGENTS SUCH AS METHYLENE CHLORIDE, TRICHLOROETHYLENE, AND TRICHLOROETHANE. CHLORINATED CLEANING AGENTS WILL CAUSE DAMAGE TO GRAPHITE/ARMID EPOXY STRUCTURES.

CAUTION: DO NOT PUT PARTS IN THE SOLVENT OR LET SOLVENT STAY ON THE PARTS.

1. Clean all parts by standard industry practices and the instructions in SOPM 20-30-03.

57-26-31

CLEANING  
Page 401  
Jul 01/98

01.1

CHECK

1. Check all parts for obvious defects in accordance with standard industry practices.
2. Check honeycomb and bonded parts for evidence of delamination, internal water, scratches and contour defects.
  - A. Examine for delamination ultrasonically.
  - B. Examine areas suspected of containing water radiographically to determine extent of damage.
  - C. Examine edges of panel carefully for cuts and abrasions. Delamination starts very easily from damage to an edge member.
  - D. Refer to 767 Structural Repair Manual, 57-53-02, for allowable damage data.
3. Penetrant check per 20-20-02 -- Frame (330, 335, 340, 345, IPL Fig. 1); (445, 455, 460, 465, 475, 480, IPL Fig. 2); hinge fitting (190B, 191B, 193C, 194C, IPL Fig. 1); (250, 255, 260, 265, IPL Fig. 2); link fitting (235, 237, 238, IPL Fig. 1); (335, 340, 345, IPL Fig. 2); clip (265, IPL Fig. 1); (375, IPL Fig. 2).

**57-26-31**

CHECK

01.1

Page 501

Nov 01/02

REPAIR – GENERAL1. Content

- A. Repair, refinish and replacement procedures are included in separate repair sections as follows:

<u>P/N</u>	<u>NAME</u>	<u>REPAIR</u>
113T1830	FITTING ASSEMBLY	1-1
113T1833	HINGE FITTING ASSEMBLY	2-1
- -	MISCELLANEOUS PARTS REFINISH	3-1

2. Standard Practices

- A. Refer to the following standard practices, as applicable, for details of procedures in individual repairs.

20-10-06 Repair of Conductive Coatings  
 20-11-03 Repair of Electrical Terminations and Electrical Bonding Areas  
 20-30-02 Stripping of Protective Finishes  
 20-30-03 General Cleaning Procedures  
 20-41-01 Decoding Table for Boeing Finish Codes  
 20-41-02 Application of Chemical and Solvent Resistant Finishes  
 20-43-01 Chromic Acid Anodizing  
 20-50-03 Bearing and Bushing Replacement  
 20-50-07 Lubrication  
 20-60-02 Finishing Materials  
 20-60-03 Lubricants  
 20-60-04 Miscellaneous Materials

3. Materials

NOTE: Equivalent substitutes can be used.

- A. Static Conditioner -- 28-C-1 (Ref SOPM 20-60-04)  
 B. Surfacer -- 8-W-5 (Ref SOPM 20-60-02)  
 C. Coating, Conductive -- BMS 10-21 type 3 (Replaces type 1)  
 (Ref SOPM 20-60-02)  
 D. Primer -- BMS 10-11 type 1 (Ref SOPM 20-60-02)  
 E. Primer -- BMS 10-79 type 2 (Ref SOPM 20-60-02)  
 F. Enamel -- BMS 10-60 type 2 Gloss, BAC707 Gray (Ref SOPM 20-60-02)

57-26-31

REPAIR-GENERAL

01.1

Page 601

Jul 01/98

- | G. Sealant -- BMS 5-95 (Ref SOPM 20-60-04)
- | H. Grease -- MIL-G-23827 (Ref SOPM 20-60-03)

**57-26-31**

REPAIR-GENERAL

01.1

Page 602

Jul 01/98

**4. Dimensioning Symbols**

A. Standard True Position Dimensioning Symbols used in applicable repair procedures are shown in Fig. 601.

—	STRAIGHTNESS	$\oplus$	THEORETICAL EXACT POSITION OF A FEATURE (TRUE POSITION)
$\square$	FLATNESS	$\varnothing$	DIAMETER
$\perp$	PERPENDICULARITY (OR SQUARENESS)	BASIC (BSC) OR DIM	A THEORETICALLY EXACT DIMENSION USED TO DESCRIBE SIZE, SHAPE OR LOCATION OF A FEATURE FROM WHICH PERMISSIBLE VARIATIONS ARE ESTABLISHED BY TOLERANCES ON OTHER DIMENSIONS OR NOTES.
//	PARALLELISM	-A-	DATUM
$\bigcirc$	ROUNDNESS	$\textcircled{M}$	MAXIMUM MATERIAL CONDITION (MMC)
$\bigcirc$	CYLINDRICITY	$\textcircled{S}$	REGARDLESS OF FEATURE SIZE (RFS)
$\frown$	PROFILE OF A LINE	$\textcircled{P}$	PROJECTED TOLERANCE ZONE
$\triangle$	PROFILE OF A SURFACE		
$\odot$	CONCENTRICITY		
$\equiv$	SYMMETRY		
$\sphericalangle$	ANGULARITY		
$\nearrow$	RUNOUT		

**EXAMPLES**

$\boxed{\text{—} \quad 0.002}$	STRAIGHT WITHIN 0.002	$\boxed{\textcircled{C} \quad \varnothing \quad 0.0005}$	CONCENTRIC TO C WITHIN 0.0005 DIAMETER (FULL INDICATOR MOVEMENT)
$\boxed{\perp \quad B \quad 0.002}$	PERPENDICULAR TO B WITHIN 0.002	$\boxed{\equiv \quad A \quad 0.010}$	SYMMETRICAL WITH A WITHIN 0.010
$\boxed{\parallel \quad A \quad 0.002}$	PARALLEL TO A WITHIN 0.002	$\boxed{\sphericalangle \quad A \quad 0.005}$	ANGULAR TOLERANCE 0.005 WITH A
$\boxed{\bigcirc \quad 0.002}$	ROUND WITHIN 0.002	$\boxed{\oplus \quad B \quad \varnothing \quad 0.002 \quad \textcircled{S}}$	LOCATED AT TRUE POSITION WITHIN 0.002 DIA IN RELATION TO DATUM B, REGARDLESS OF FEATURE SIZE
$\boxed{\bigcirc \quad 0.010}$	CYLINDRICAL SURFACE MUST LIE BETWEEN TWO CONCENTRIC CYLINDERS, ONE OF WHICH HAS A RADIUS 0.010 INCH GREATER THAN THE OTHER	$\boxed{\perp \quad A \quad \varnothing \quad 0.010 \quad \textcircled{M} \quad 0.510 \quad \textcircled{P}}$	AXIS IS TOTALLY WITHIN A CYLINDER OF 0.010-INCH DIAMETER, PERPENDICULAR TO, AND EXTENDING 0.510-INCH ABOVE, DATUM A, MAXIMUM MATERIAL CONDITION
$\boxed{\frown \quad A \quad 0.006}$	EACH LINE ELEMENT OF THE SURFACE AT ANY CROSS SECTION MUST LIE BETWEEN TWO PROFILE BOUNDARIES 0.006 INCH APART IN RELATION TO DATUM PLANE A	$\boxed{2.000}$	EXACT DIMENSION IS 2.000
$\boxed{\triangle \quad A \quad 0.020}$	SURFACES MUST LIE WITHIN PARALLEL BOUNDARIES 0.02 INCH APART AND EQUALLY DISPOSED ABOUT TRUE PROFILE	OR 2.000 BSC	

True Position Dimensioning Symbols  
 Figure 601

FITTING ASSEMBLY - REPAIR 1-1

113T1830-1, -3, -4

NOTE: Refer to REPAIR-GEN for list of applicable standard practices.

1. Bushing Replacement

- A. Remove bushings (225, 230, IPL Fig. 1); (325, 330, IPL Fig. 2)
- B. Install bushings (225, 230, IPL Fig. 1); (325, 330, IPL Fig. 2) per 20-50-03 using wet BMS 5-95 sealant.
- C. Machine bushing bores per Fig. 601.
- D. Fillet seal all around bushing flanges with BMS 5-95 sealant.

2. Refinish

- A. Link fitting (235, 237, 238, IPL Fig. 1); (335, 340, 345, IPL Fig. 2) -- Chromic acid anodize and apply one coat BMS 10-11 type 1 primer (F-18.13). Omit primer from bushing holes. Material: Al alloy.

**57-26-31**

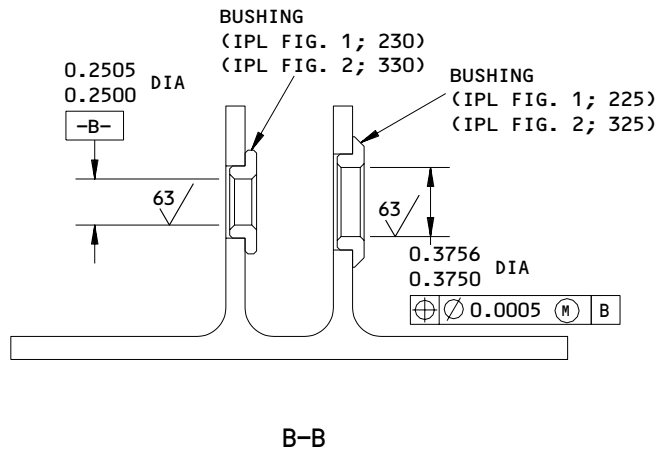
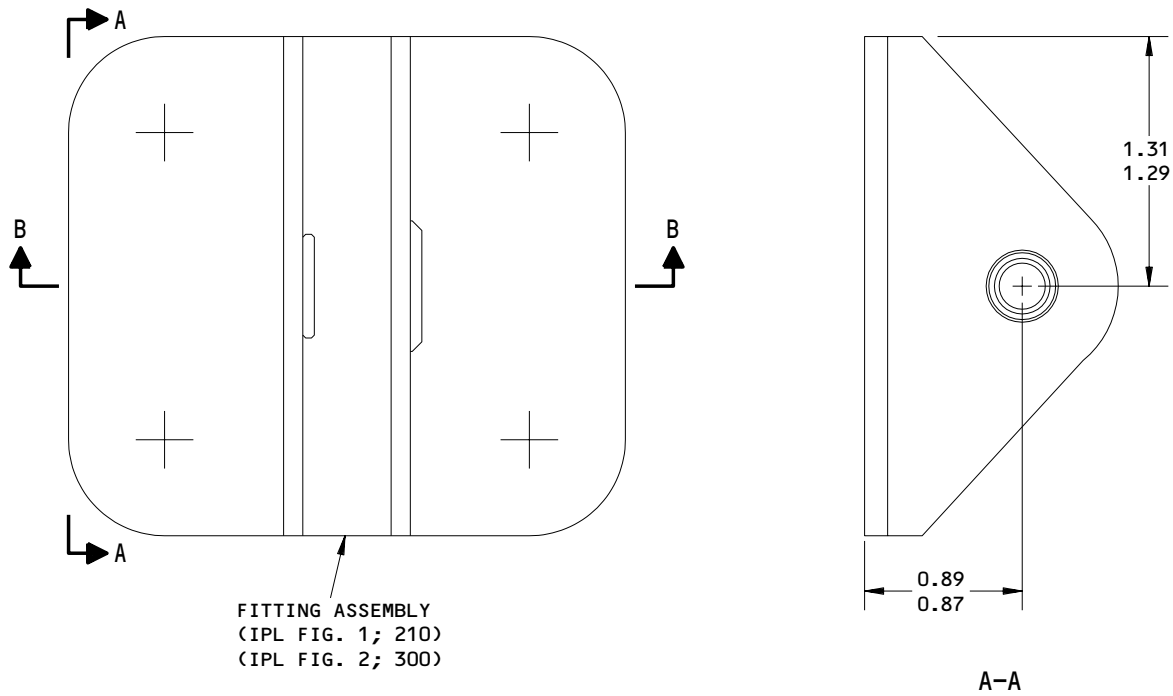
REPAIR 1-1

01.101

Page 601

Nov 01/02





ALL DIMENSIONS ARE IN INCHES

113T1830-1  
 Fitting Assembly Bushing Repair  
 Figure 601

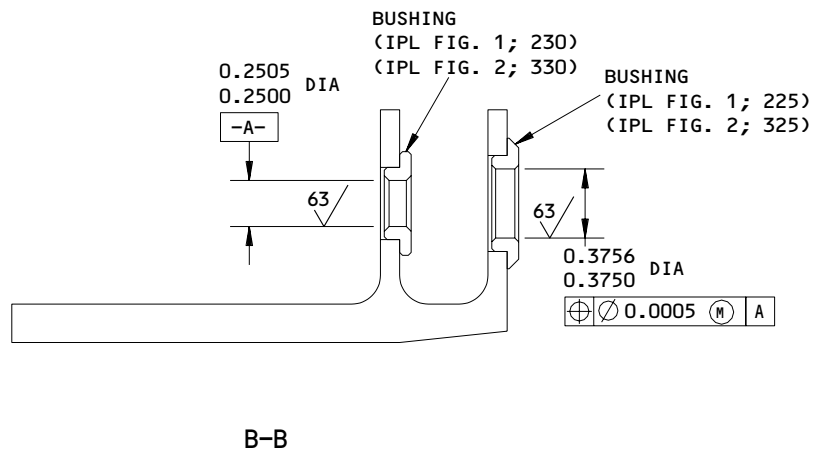
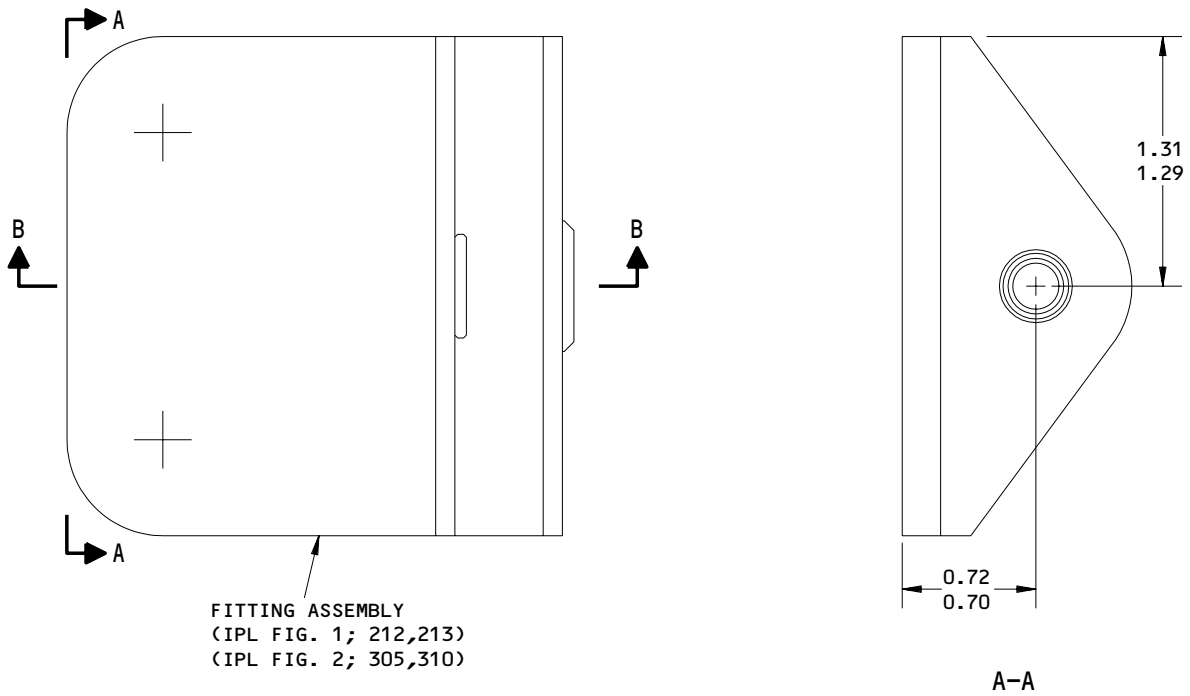
**57-26-31**

REPAIR 1-1

01.1

Page 602

Nov 01/02



ALL DIMENSIONS ARE IN INCHES

113T1830-3,-4  
 Fitting Assembly Bushing Repair  
 Figure 602

**57-26-31**

REPAIR 1-1

Page 603

Nov 01/02

01.1

HINGE FITTING ASSEMBLY – REPAIR 2-1  
113T1833-21, -22, -33, -34

NOTE: Refer to REPAIR-GEN for list of applicable standard practices.

1. Bearing Replacement

- A. Remove bearing (185A, IPL Fig. 1); (245, IPL Fig. 2).
- B. Coat all surfaces of bearing (185A, IPL Fig. 1); (245, IPL Fig. 2) with MIL-G-23827 grease (F-19.08).
- C. Install bearing (185A, IPL Fig. 1); (245, IPL Fig. 2) and roller or anvil swage per 20-50-03.
- D. Bearing must be able to withstand a minimum pushout load of 844 pounds.

2. Refinish

- A. Hinge fitting (190B, 191B, 193C, 194C, IPL Fig. 1); (250, 255, 260, 265, IPL Fig. 2) -- Chromic acid anodize and apply one coat BMS 10-11 type 1 primer (F-18.13), except omit primer from the bearing holes.  
Material: Al alloy.

**57-26-31**

REPAIR 2-1

01.1

Page 601

Nov 01/02

MISCELLANEOUS PARTS - REPAIR 3-1

1. Repair of parts listed in Fig. 601 consists of restoration of the original finish.

IPL FIG. & ITEM	MATERIAL	FINISH
Fairing assy (1B, 1D, 1F, 5B, 5D, 5F, IPL Fig. 1)		113T1821-29A,-30A,-35A,-36A,-39A,-40A: Apply BMS 10-79 primer and BMS 10-60, Type 2 enamel (F-19.40), Boeing color 707 grey, to exterior surface and trimmed edges.  113T1821-29B,-29C,-30B,-30C,-35B,-35C,-36B,-36C,-39B,-39C,-40B,-40C: Apply BMS 10-79 primer and BMS 10-60, Type 2 enamel (F-19.41-XXX), color per operators color scheme, to exterior surface and trimmed edges.
Fairing assy (1C, 1E, 5C, 5E, IPL Fig. 1)		Apply no finish.
Fairing assy (1G, 5G, IPL Fig. 1)		Apply BMS 10-79 primer and BMS 10-60, Type 2 enamel (F-19.41-7446), to exterior surface and trimmed edges.
Fairing assy (1H, 5H, IPL Fig. 1)		Apply BMS 10-79 primer and BMS 10-60, Type 2 enamel (F-19.41-708), color 708 grey, Desoto 1000 only, to exterior surface and trimmed edges.
Fairing assy (1J, 5J, IPL Fig. 1)		Apply BMS 10-79 primer and BMS 10-60, Type 2 enamel (F-19.40), Boeing color 707 grey, to exterior surface and trimmed edges.

Refinish Details  
Figure 601 (Sheet 1)

# 57-26-31

REPAIR 3-1

01.1

Page 601

Nov 01/02

IPL FIG. & ITEM	MATERIAL	FINISH
Retainer (15A,15B, 90,95, IPL Fig. 1; 45,50,165,170, IPL Fig. 2), Angle (195,200, IPL Fig. 1; 290,295, IPL Fig. 2)	Al alloy	Chromic acid anodize, Type 1 and apply one coat BMS 10-11, Type 1 primer (F-18.13), followed by BMS 10-60 gloss enamel (SRF-14.9813).
Clip (25,30, IPL Fig. 1; 75,80, IPL Fig. 2)	Al alloy	Chemical treat all over. Apply one coat BMS 10-11, Type 1 primer (F-18.06).
Door (240,245, IPL Fig. 1; 355,360, IPL Fig. 2)	Al alloy	Chemical treat (F-17.07) all over. Apply one coat BMS 10-11, Type 1 primer (F-20.02) to inside surface. Apply one coat BMS 10-79, Type 2 primer (F-19.46) to outside surface. Restencil identification number center of door, using BMS 10-11, Type 2 enamel, BAC 707 black. Characters to be 1/2 inch high.
Clip (265, IPL Fig. 1; 375, IPL Fig. 2)	Al alloy	Chromic acid anodize, Type 1 and apply one coat BMS 10-11, Type 1 primer (F-18.13).
Frame (320A,325A, IPL Fig. 1; 445, 450, IPL Fig. 2)		

Refinish Details  
 Figure 601 (Sheet 2)

# 57-26-31

REPAIR 3-1

01.1

Page 602

Nov 01/02


**BOEING**  
 COMPONENT  
 MAINTENANCE MANUAL

IPL FIG. & ITEM	MATERIAL	FINISH
Bond assy (305A, 305B, 310A, 310B, IPL Fig. 1; 420, 425, IPL Fig. 2)	Graphite/epoxy	Prepare surface and apply Dexter 28-C-1 static conditioner plus Dexter 8-W-5 surfacer (SRF-14.672) all over exterior surface and apply BMS 10-21, Type 1 conductive coating (SRF-14.68) all over exterior surface and trimmed edges. Apply one coat BMS 10-79, Type 2 primer (F-19.46) all over.
Frame (330, 330B, 340, 340A, IPL Fig. 1; 420, 425, IPL Fig. 2)	Al alloy	Chromic acid anodize, Type 1 and apply one coat BMS 10-11, Type 1 primer (F-18.13). Apply BMS 10-60 gloss enamel (SRF-14.9813) all over except to surfaces shown in Fig. 602.
Frames (330A, 330C, 330D, 335A, IPL Fig. 1; 460, 470, IPL Fig. 2)	Al alloy	Chromic acid or sulfuric acid anodize (F-17.05). Apply one coat primer, BMS 10-11, Type 1 (F-20.02). Apply enamel, BMS 10-60, color BAC707 grey gloss (SRF-14.9813).

Refinish Details  
 Figure 601 (Sheet 3)

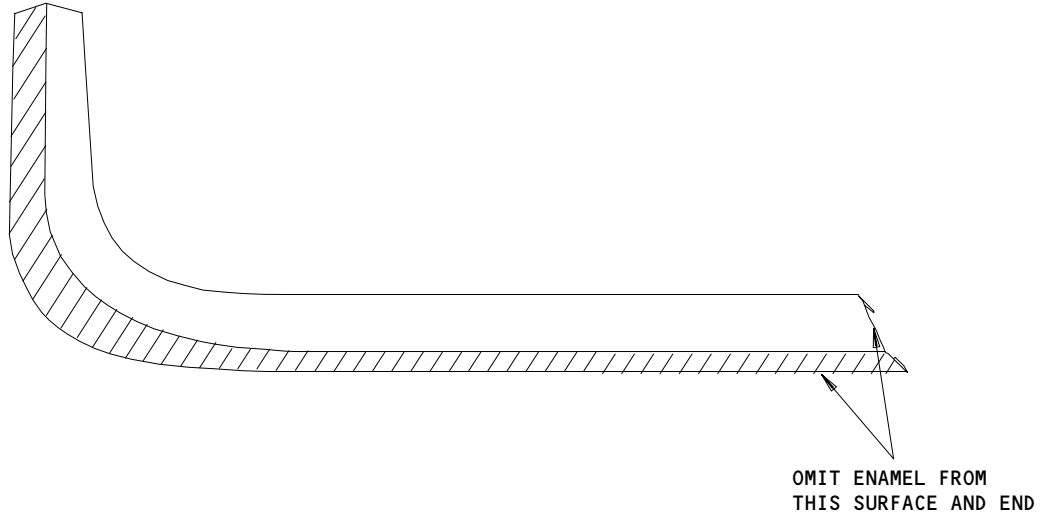
**57-26-31**

REPAIR 3-1

01.1

Page 603

Nov 01/02



Frame Refinish  
Figure 602

3845

**57-26-31**

REPAIR 3-1

Page 604

Nov 01/02

01.101

ASSEMBLY1. Materials

NOTE: Equivalent substitutes can be used.

- A. Lockwire -- MS20995C47 (Ref SOPM 20-50-02)
- B. Adhesive -- Type 60 (Ref SOPM 20-50-12)
- C. Sealant -- BMS 5-95 (Ref SOPM 20-60-04)
- D. Epoxy Resin -- EA 934 (Ref SOPM 20-50-12)
- E. Epoxy Resin -- FR No. 5312S Resin, No. 5412C Hardener, Fiber-Resin Co., (V26348)
- F. Epoxy Resin -- BMS 5-109 type 2, class 2 grade A (Ref SOPM 20-50-12)
- G. Mold Release Agent -- Garan 225 (Ref SOPM 20-60-04)
- H. Solvent -- Series 83 (Ref SOPM 20-30-83)
- I. Cheesecloth -- BMS 15-5, class A (Ref SOPM 20-60-04)
- J. Milled Glass Fibers -- (Ref SOPM 20-60-04)

2. Assembly

CAUTION: USE ONLY TITANIUM OR CORROSION RESISTANT STEEL FASTENERS WITH GRAPHITE COMPOSITES. ALUMINUM OR PLATED ALLOY STEEL FASTENERS ARE NOT PERMITTED AS GALVANIC CORROSION WILL OCCUR.

- A. Use standard industry practices and these steps.
- B. Install lockwire (MS20995C47) per 20-50-02 to hold seal (10A, 10B, 85, IPL Fig. 1); (25, 30, 140, IPL Fig. 2) to retainer (15A, 15B, 90, 95, IPL Fig. 1); (45, 50, 165, 170, IPL Fig. 2).
- C. Install bonding jumper (115, IPL Fig. 1); (195, IPL Fig.2) and electrically bond ends per SOPM 20-11-03. Make sure the resistance between door (240, 245, IPL Fig. 1); (355, 360, IPL Fig. 2) and frame (320A, IPL Fig. 1); (445, IPL Fig. 2) is 0.01 ohm maximum.

**57-26-31**
 ASSEMBLY  
 Page 701  
 Jul 01/98

01.1



D. Bond plugs (8, 12A, 87A, IPL Fig. 1); (20, 35, 145, IPL Fig. 2) to seal (10A, 10B, 85, IPL Fig. 1); (25, 30, 140, IPL Fig. 2) with type 60 adhesive per 20-50-12. Trim plugs (12A, 87A, IPL Fig. 1); (35, 145, IPL Fig. 1) as required.

E. Fitting assemblies (210, 212, 213, IPL Fig. 1); (300, 305, 310, IPL Fig. 2).

(1) Clean with 150 grit or finer sandpaper the surface to be bonded. Do not go through to the fibers. Remove the dust. Mask off adjacent areas to let unwanted adhesive go on the masking tape and not on the surface of the parts.

**NOTE:** Most composite parts will have bondable tedlar film on the inner surface. Do not remove, abrade, grit or sandblast tedlar. Apply adhesive directly over bondable tedlar.

(2) Apply mold release agent to the fitting assembly. This will permit replacement of the fitting assembly.

(3) Prepare EA 934 filler by thoroughly mixing 100 parts by weight of A. and 300 parts by weight of B. Add 24 parts by weight of milled glass fibers (1/32 inch length cationic binder) to the resin mix. Optional filler, FR 5312S prepared by mixing 100 parts by weight of FR 5312S epoxy resin and 10 parts by weight hardener 5412C. Add 20 parts by weight of milled glass fibers (per above) to the resin mix.

**WARNING:** THESE RESIN SYSTEMS WILL IRRITATE AND STAIN THE SKIN. THEY ARE FLAMMABLE AND TOXIC. USE SKIN PROTECTION. WASH HANDS BEFORE EATING OR SMOKING. USE SUFFICIENT VENTILATION.

(4) Apply a thin coating (approximately 0.2 inch thick to adjust for resin squeeze-out) of adhesive on the faying surface to be bonded.

(5) Place fitting (210, 212, 213, IPL Fig. 1); (300, 305, 310, IPL Fig. 2) into contact with bond assembly (305A, 305B, 310A, 310B, IPL Fig. 1); (420, 425, IPL Fig. 2). Apply pressure slowly with clamps or temporary bolts coated with mold release agent. Do not use these fasteners in final installation. Use only sufficient pressure to squeeze out unwanted resin but not to bend the panel or fitting.

(6) Wipe off unwanted resin with a cheesecloth wet with a series 83 solvent.

(7) Let the adhesive cure for 3 hours at 70°F minimum.

**57-26-31**ASSEMBLY  
Page 702  
Jul 01/98

01.1

**BOEING**  
COMPONENT  
MAINTENANCE MANUAL

- (8) After the adhesive has gelled, complete the curing using one of two methods; 24 hours at 75°F or 3 hours at 130°F.
- (9) Install bolts (215, IPL Fig. 1); (315, IPL Fig. 2) with wet BMS 5-95 after curing is completed.
- F. Replace shims (177, 179, 285, IPL Fig. 1); (270, 275, 395, IPL Fig. 2) if required, by fabricating to dimensions obtained during disassembly. Remove 0.003 inch delaminations as required and apply one coat of primer, BMS 10-11 type 1.
- G. Install hinge fittings assemblies (135B, 140B, 145C, 150C, IPL Fig. 1); (200, 205, 210, 215, IPL Fig. 2) with fay surface seal of BMS 5-95 sealant between hinge fitting assemblies (135B, 140B, 145C, 150C, IPL Fig. 1); (200, 205, 210, 215, IPL Fig. 2); frames (320A, 325A, IPL Fig. 1); (445, 450, IPL Fig. 2) and shims (177, 179, IPL Fig. 1); (270, 275, IPL Fig. 2).
- H. Install blind rivets (295, 300, IPL Fig. 1); (410, 415, IPL Fig. 2) and check resistance measurement between conductive finish and bonding fastener as follows: Place the multimeter probes (Ref 20-10-06) in direct contact with the bonding fastener and the conductive finish, spaced  $1 \pm 1/4$  inch apart. It may be necessary to remove or penetrate outer coating to contact conductive finish. Resistance measured shall not exceed 300,000 ohms. If it was necessary to remove or pierce outer finish with probe, refinish to original specifications (REPAIR 3-1, Fig. 601).

**57-26-31**ASSEMBLY  
Page 703  
Nov 01/02

01.1



ILLUSTRATED PARTS LIST

1. This section lists and illustrates replaceable or repairable component parts. The Illustrated Parts Catalog contains a complete explanation of the Boeing part numbering system.
2. Indentures show parts relationships as follows:

Assembly

Detail Parts for Assembly

Subassembly

Attaching Parts for Subassembly

Detail Parts for Subassembly

Detail Installation Parts (Included only if installation parts may be returned to shop as part of assembly)

3. One use code letter (A, B, C, etc.) is assigned in the EFF CODE column for each variation of top assembly. All listed parts are used on all top assemblies except when limitations are shown by use code letter opposite individual part entries.
4. Letter suffixes (alpha-variants) are added to item numbers for optional parts, Service Bulletin modification parts, configuration differences (except left- and right-hand parts), product improvement parts, and parts added between two sequential item numbers. The alpha-variant is not shown on illustrations when appearance and location of all variants of the part is the same.
5. Service Bulletin modifications are shown by the notations PRE SB XXXX and POST SB XXXX.
  - A. When a new top assembly part number is assigned by Service Bulletin, the notations appear at the top assembly level only. The configuration differences at detail part level are then shown by use code letter.
  - B. When the top assembly part number is not changed by the Service Bulletin, the notations appear at the detail part level.

6. Parts Interchangeability

Optional  
(OPT)

The parts are optional to and interchangeable with other parts having the same item number.

Supersedes, Superseded By  
(SUPSDS, SUPSD BY)

The part supersedes and is not interchangeable with the original part.

Replaces, Replaced By  
(REPLS, REPLD BY)

The part replaces and is interchangeable with, or is an alternate to, the original part.

**57-26-31**

ILLUSTRATED PARTS LIST

01 Page 1001

Jul 10/83

## 7. Boeing Proprietary Color Coded Parts

Color-coded parts are identified with an alpha suffix. These entries represent parts that are of the same configuration, but have different finishes. Orders for color-coded parts should include the registry number of the airplane for which the parts are ordered.

**57-26-31**ILLUSTRATED PARTS LIST  
01.1 Page 1002  
Nov 01/02


**BOEING**  
 COMPONENT  
 MAINTENANCE MANUAL
VENDORS

OPTK6 SPS TECHNOLOGIES INC AEROSPACE PRODUCTS DIV  
 5195 W 4700 SPO BOX 18459  
 KEARNS, UTAH 84118

06725 AIR INDUSTRIES CORPORATION  
 12570 KNOTT STREET  
 GARDEN GROVE, CALIFORNIA 92641-3932  
 FORMERLY AIR INDUSTRIES OF CALIF IN GARDENA, CALIF.

08524 DEUTSCH FASTENER CORP SEE CODE V97928

15653 FAIRCHILD FASTENERS KAYNAR PRODUCTS DIV  
 800 S STATE COLLEGE BLVD  
 FULLERTON, CALIFORNIA 92831-3001  
 FORMERLY VK6405 MICRODOT AEROSP LTD; FORMERLY KAYNAR TECH  
 KAYNAR DIV

15860 NEW HAMPSHIRE BALL BEARINGS, INCORPORATED ASTRO DIVISION  
 155 LEXINGTON AVENUE  
 LACONIA, NEW HAMPSHIRE 03246-2937  
 FORMERLY ASTRO BEARING CORP, LOS ANGELES, CALIF.

17446 HUCK MFG CO GOV CONTRACTS LOS ANGELES DIV SUB OF FED-MOGUL  
 900 WATSON CENTER ROAD  
 CARSON, CALIFORNIA 90745

5M902 FAIRCHILD IND INC FAIRCHILD AEROSPACE FASTENER DIV  
 3016 W LOMITA BLVD  
 TORRANCE, CALIFORNIA 90505-5103  
 FMLY IN REDONDO BEACH, CALIF

50294 NEW HAMPSHIRE BALL BEARINGS INC  
 9727 DESOTO AVE PO BOX 2515  
 CHATSWORTH, CALIFORNIA 91311-4323  
 FORMERLY NIPPON MINATURE BEARING CORP V23589 AND NMB  
 AMERICA INC AND NMB INC

52825 HOFFMAN CAMERA CORP  
 19 GRAND AVENUE  
 FARMINGTON, NEW YORK 11735-6315

52828 REPUBLIC FASTENER MFG CORP  
 1300 RANCHO CONEJO BLVD  
 NEWBURY PARK, CALIFORNIA 91320-1405  
 FORMERLY IN SYLMAR, CALIFORNIA

**57-26-31**
 ILLUSTRATED PARTS LIST  
 01.1 Page 1003  
 Nov 01/02

VENDORS

56878 SPS TECHNOLOGIES INC AEROSPACE AND INDUSTRIAL PRODUCTS DIV  
HIGHLAND AVENUE  
JENKINTOWN, PENNSYLVANIA 19046  
FORMERLY STANDARD PRESSED STEEL

60516 WEST COAST AEROSPACE INC  
812 MIRAFLORES STREET  
SAN PEDRO, CALIFORNIA 90731-1439

71087 BOOTS ACFT NUT DIV TOWNSEND CO SEE TEXTRON INC CHERRY  
FASTENER TOWNSEND DIV V11815

72962 HARVARD INDUSTRIES INC  
3 WERNER WAY SUITE 210  
LEBANON, NEW JERSEY 08833  
FORMERLY AMERACE CORP ESNA DIV  
FORMERLY ELASTIC STOP NUT IN UNION, NJ

73197 HI-SHEAR TECHNOLOGY CORP  
2600 SKYPARK DRIVE  
TORRANCE, CALIFORNIA 90509

80539 SPS TECHNOLOGIES INC AEROSPACE PRODUCTS DIV  
2701 SOUTH HARBOR BOULEVARD PO BOX 1259  
SANTA ANA, CALIFORNIA 92702-1259  
FORMERLY NUTT-SHEL DIV OF SPC WESTERN CO V80539  
AND STANDARD PRESSED STEEL WESTERN DIV V17279

9N513 VOI SHAN/CHATSWORTH DIV OF VSI CORP SUB OF FAIRCHILD IND  
CHATSWORTH, CALIFORNIA 91311-5013  
COMPANY NO LONGER WISHES TO BE CONSIDERED FOR FED CONTRCTG

92215 FAIRCHILD IND INC FAIRCHILD AEROSPACE FASTENER DIV  
3010 W LOMITA BLVD  
TORRANCE, CALIFORNIA 90505-5102  
FORMERLY VOI-SHAN IN CULVER CITY, CALIF

97928 HUCK INTL INC  
3969 PARAMOUNT BLVD  
LAKEWOOD, CALIFORNIA 90712-4193

**57-26-31**

ILLUSTRATED PARTS LIST  
01.1 Page 1004  
Nov 01/02


**BOEING**  
 COMPONENT  
 MAINTENANCE MANUAL

PART NUMBER	AIRLINE PART NO.	FIG.	ITEM	TTL REQ
ABWEN05VC		1	185A	2
		2	245	2
AG5V29C		1	185A	2
		2	245	2
AN960-10L		1	130	6
		2	190	6
AN960XC10L		1	45	2
		1	75	10
		1	105	6
		2	65	2
		2	90	10
		2	155	6
		1	185A	2
		2	245	2
BACB28AM06B008A		1	225	2
		2	325	2
		1	230	2
BACB28AP04P008		2	330	2
		1	250	7
BACB30LR3-3		2	350	7
		1	253	1
BACB30LR3-4		2	353	1
		1	120	1
BACB30MB6A4		2	175	1
		1	123	1
BACB30MB6A5		2	180	1
		1	170	8
BACB30MY6K3		2	230	8
		1	275B	2
BACB30MY8K7		1	365	2
		2	385	2
		1	40	2
BACB30NM3K3		2	60	2
		1	65	10
BACB30NN3K3		1	100A	6
		2	85	10
		2	150	6
BACB30NW8K5		1	270A	2
		1	360	2
		2	380	2
BACB30NY8K5		1	215	8
		2	315	8

57-26-31

 ILLUSTRATED PARTS LIST  
 01.1 Page 1005  
 Nov 01/02

PART NUMBER	AIRLINE PART NO.	FIG.	ITEM	TTL REQ
BACB30NY8K7		1	160	16
		2	220	16
BACC30M6		1	175	8
		2	235	8
BACC30M8		1	165	16
		1	220	8
		1	280	4
		1	370	4
		2	225	16
		2	320	8
BACC30X6		2	390	4
		1	125	2
		2	185	2
BACJ40A20-5		1	115	1
		2	195	1
BACN10JC3		1	50	2
		1	80	10
		1	110	6
		2	70	2
		2	95	10
		2	160	6
BACN10KE3B2		1	255	8
		2	370	8
BACR15BA3AD		1	260	16
		2	365	16
BACR15BA5AD		1	20	8
		2	40	8
BACR15BA6AD		1	81	5
		1	205	17
		1	290	33
		2	120	5
		2	280	17
		2	405	33
BACR15BB6AD		1	35	2
		1	207	6
		2	55	2
		2	285	6
		2	285	6
BACR15FT8AD5		1	317	2
		2	440	2
BACS40R08B18F		1	179	4
		2	275	4
BACS40R10C20F		1	285	1
		1	375	1
BACS40R10C20F		1	375	1
		2	395	1

# 57-26-31

 ILLUSTRATED PARTS LIST  
 01.1 Page 1006  
 Nov 01/02




**BOEING**  
 COMPONENT  
 MAINTENANCE MANUAL

PART NUMBER	AIRLINE PART NO.	FIG.	ITEM	TTL REQ
BACS40R22B44F		1	177	2
		2	270	2
BRFR220A3-2		1	255	8
		2	370	8
BRH10A3		1	50	2
		1	80	10
		1	110	6
		2	70	2
		2	95	10
B30MY6K3		2	160	6
		1	170	8
		2	230	8
B30MY8K7		1	275B	2
		1	365	2
		2	385	2
B30NW8K5		1	270A	2
		1	360	2
		2	380	2
		1	255	8
F51750-3-2		2	370	8
		1	255	8
HL10VAZ6-3		2	370	8
		1	170	8
HL10VAZ8-7		2	230	8
		1	275B	2
		1	365	2
		2	385	2
HL11VAZ8-5		1	270A	2
		1	360	2
		2	380	2
HL1187-6		1	125	2
		2	185	2
HL13VAZ8-5		1	215	8
		2	315	8
HL13VAZ8-7		1	160	16
		2	220	16
		1	215	8
HL13V5		2	315	8
		1	160	16
HL13V7		2	220	16
		1	120	1
HL448UC6-4		2	175	1
		1	123	1
HL448UC6-5		2	180	1
		1	123	1

57-26-31

 ILLUSTRATED PARTS LIST  
 01.1 Page 1007  
 Nov 01/02

PART NUMBER	AIRLINE PART NO.	FIG.	ITEM	TTL REQ
HL79-6		1	175	8
		2	235	8
HL79-8		1	165	16
		1	220	8
HL79-8		1	280	4
		1	370	4
		2	225	16
		2	320	8
		2	390	4
		2	125	2
HL87-6		1	125	2
		2	185	2
H10-3BAC		1	50	2
		1	80	10
		1	110	6
		2	70	2
		2	95	10
		2	160	6
L801-8K5		1	215	8
		2	315	8
L801-8K7		1	160	16
		2	220	16
L803-8K5		1	270A	2
		1	360	2
		2	380	2
MS15001-1		1	180	2
MS15001-1		2	240	2
NAS1399MW6-4		1	295	2
		2	410	2
NAS1399MW6-5		1	300	2
		2	415	2
NS103191-02-2		1	255	8
		2	370	8
NS202101-02		1	50	2
		1	80	10
		1	110	6
		2	70	2
		2	95	10
		2	160	6
RMF9213-2-3		1	255	8
		2	370	8
RMLH9075-3W		1	50	2
		1	80	10
		1	110	6
		2	70	2
		2	95	10
		2	160	6

# 57-26-31

 ILLUSTRATED PARTS LIST  
 01.1 Page 1008  
 Nov 01/02


**BOEING**  
 COMPONENT  
 MAINTENANCE MANUAL

PART NUMBER	AIRLINE PART NO.	FIG.	ITEM	TTL REQ
T6S1032J		1	50	2
		1	80	10
		1	110	6
		2	70	2
		2	95	10
		2	160	6
VN303A02		1	50	2
		1	80	10
		1	110	6
		2	70	2
		2	95	10
		2	160	6
WC4486-4		1	120	1
		2	175	1
WC4486-5		1	123	1
		2	180	1
113T1803-1		1	265	1
113T1813-10		2	375	1
		1	245	1
113T1813-9		2	360	1
		1	240	1
113T1821-10		2	355	1
		1	200	1
113T1821-13		2	295	1
		1	85	1
113T1821-17		2	140	1
		1	55A	1
113T1821-18		2	100	1
		1	60A	1
113T1821-19		2	105	1
		1	55B	1
113T1821-20		2	110	1
		1	60B	1
113T1821-21		2	115	1
		1	83	1
113T1821-22		2	130	1
		1	84	1
113T1821-23		2	135	1
		1	82	1
113T1821-24		2	125	1
		1	8	1
		2	20	1

57-26-31

ILLUSTRATED PARTS LIST

01.1

Page 1009

Nov 01/02

PART NUMBER	AIRLINE PART NO.	FIG.	ITEM	TTL REQ
113T1821-25		1	15A	1
		2	45	1
113T1821-26		1	15B	1
		2	50	1
113T1821-27		1	10A	1
		2	25	1
113T1821-28		1	10B	1
		2	30	1
113T1821-29SP		1	1B	RF
113T1821-30SP		1	5B	RF
113T1821-31		1	1C	RF
113T1821-32		1	5C	RF
113T1821-33		1	287	1
		2	400	1
113T1821-34		1	12A	2
		1	87A	2
		2	35	2
		2	145	2
113T1821-35SP		1	1D	RF
		2	1	RF
113T1821-36SP		1	5D	RF
		2	5	RF
113T1821-37		1	1E	RF
113T1821-38		1	5E	RF
113T1821-39SP		1	1F	RF
113T1821-40SP		1	5F	RF
113T1821-41		1	1G	RF
113T1821-42		1	5G	RF
113T1821-43		1	1H	RF
113T1821-44		1	5H	RF
113T1821-45G		1	1J	RF
113T1821-45SP		1	1K	RF
113T1821-46G		1	5J	RF
113T1821-46SP		1	5K	RF
113T1821-47		1	350	1
113T1821-48		1	355	1
113T1821-5		1	90	1
		2	165	1
113T1821-5001		2	10	1
113T1821-5002		2	15	1
113T1821-6		1	95	1
		2	170	1
113T1821-9		1	195	1
		2	290	1

57-26-31

 ILLUSTRATED PARTS LIST  
 01.1 Page 1010  
 Nov 01/02


**BOEING**  
 COMPONENT  
 MAINTENANCE MANUAL

PART NUMBER	AIRLINE PART NO.	FIG.	ITEM	TTL REQ
113T1823-1		1	330A	1
		2	460	1
113T1823-2		1	335A	1
		2	470	1
113T1830-1		1	210	1
		2	300	1
113T1830-2		1	235	1
		2	335	1
113T1830-3		1	212	1
		2	305	1
113T1830-4		1	213	1
		2	310	1
113T1830-5		1	237	1
		2	340	1
113T1830-6		1	238	1
		2	345	1
113T1833-21		1	145C	1
		2	210	1
113T1833-22		1	150C	1
		2	215	1
113T1833-23		1	193C	1
		2	260	1
113T1833-24		1	194C	1
113T1833-24		2	265	1
113T1833-33		1	135B	1
		2	200	1
113T1833-34		1	140B	1
		2	205	1
113T1833-35		1	190B	1
		2	250	1
113T1833-36		1	191B	1
		2	255	1
113T1836-1		1	330	1
		1	380	1
		2	455	1

57-26-31

 ILLUSTRATED PARTS LIST  
 01.1 Page 1011  
 Nov 01/02

PART NUMBER	AIRLINE PART NO.	FIG.	ITEM	TTL REQ
113T1836-2		1	335	1
		1	385	1
		2	465	1
113T1836-3		1	340	1
		1	390	1
		2	475	1
113T1836-4		1	345	1
		1	395	1
		2	480	1
113T1838-3		1	320A	1
		2	445	1
		1	325A	1
113T1838-4		2	450	1
		1	25	1
		2	75	1
113T1844-1		1	30	1
		2	80	1
		1	315C	1
113T1844-2		2	435	1
		1	305B	1
		1	310B	1
113T1861-10		1	305A	1
		2	420	1
		1	310A	1
113T1861-11		2	425	1
		1	315B	1
		2	430	1
113T1861-12		1	175	8
		2	235	8
		1	165	16
113T1861-7		1	220	8
		1	280	4
		1	370	4
113T1861-8		2	225	16
		2	320	8
		2	390	4
113T1861-9		1	175	8
		2	235	8
		1	165	16
66014-6		1	220	8
		1	280	4
		1	370	4
66014-8		2	225	16
		2	320	8
		2	390	4

# 57-26-31

 ILLUSTRATED PARTS LIST  
 01.1 Page 1012  
 Nov 01/02


**BOEING**  
 COMPONENT  
 MAINTENANCE MANUAL

PART NUMBER	AIRLINE PART NO.	FIG.	ITEM	TTL REQ
69308-6A4		1	120	1
		2	175	1
69308-6A5		1	123	1
		2	180	1
96-02		1	50	2
		1	80	10
		1	110	6
		2	70	2
		2	95	10
		2	160	6

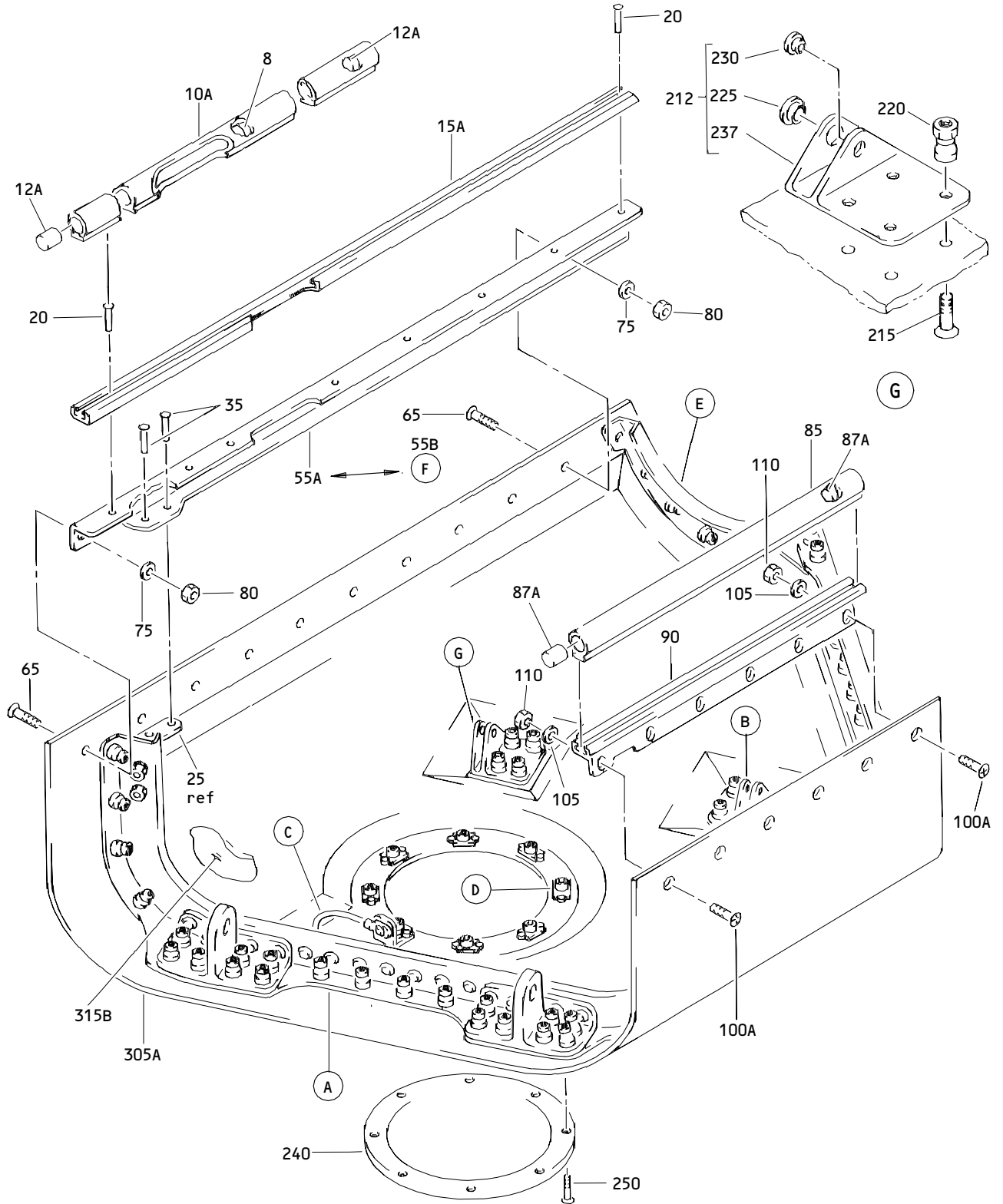
# 57-26-31

ILLUSTRATED PARTS LIST

01.1

Page 1013

Nov 01/02

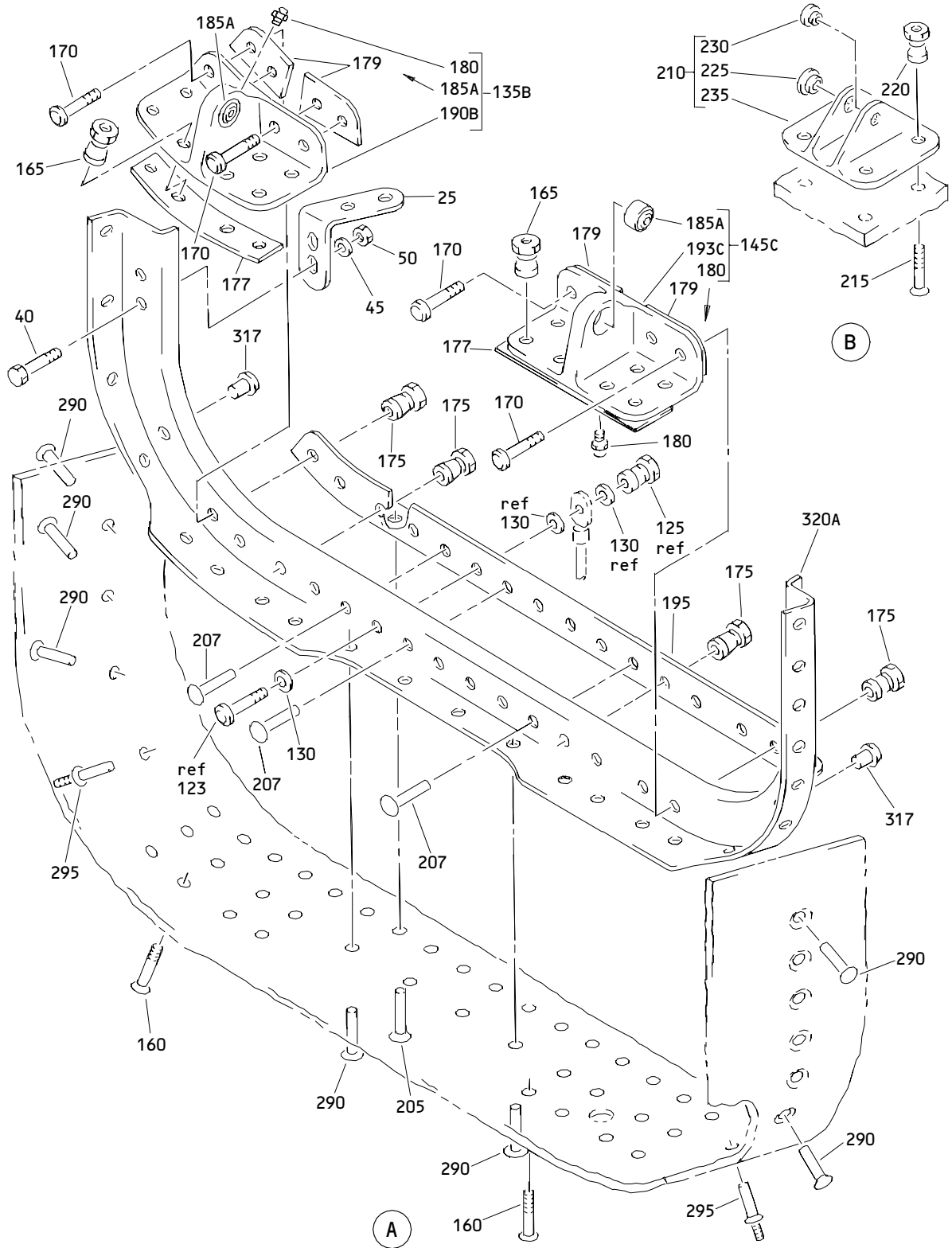


Outboard Trailing Edge Flap No. 1 Mid Fairing Assembly  
Figure 1 (Sheet 1)

**57-26-31**

ILLUSTRATED PARTS LIST  
01.1 Page 1015  
Nov 01/02

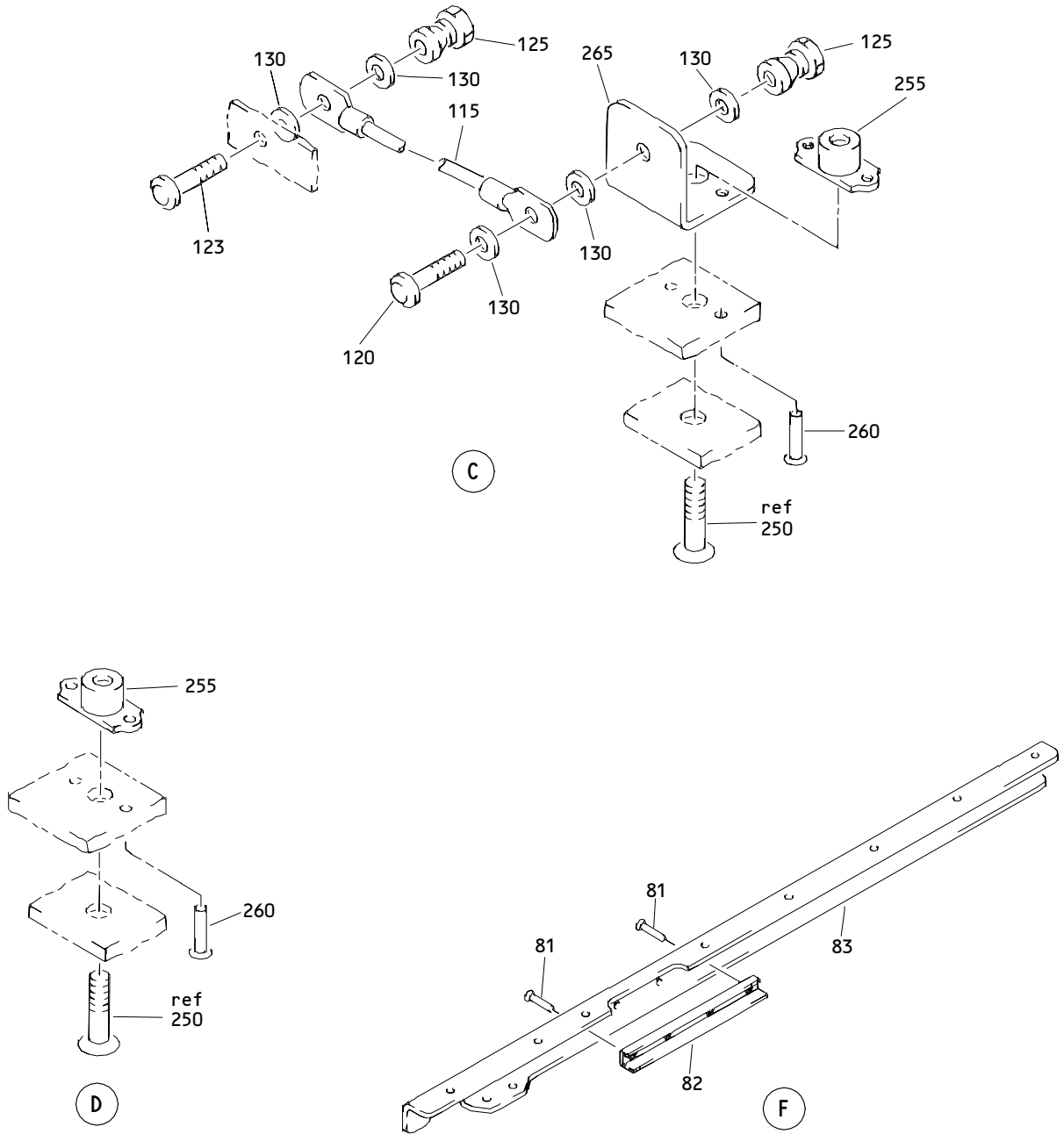




Outboard Trailing Edge Flap No. 1 Mid Fairing Assembly  
Figure 1 (Sheet 2)

**57-26-31**

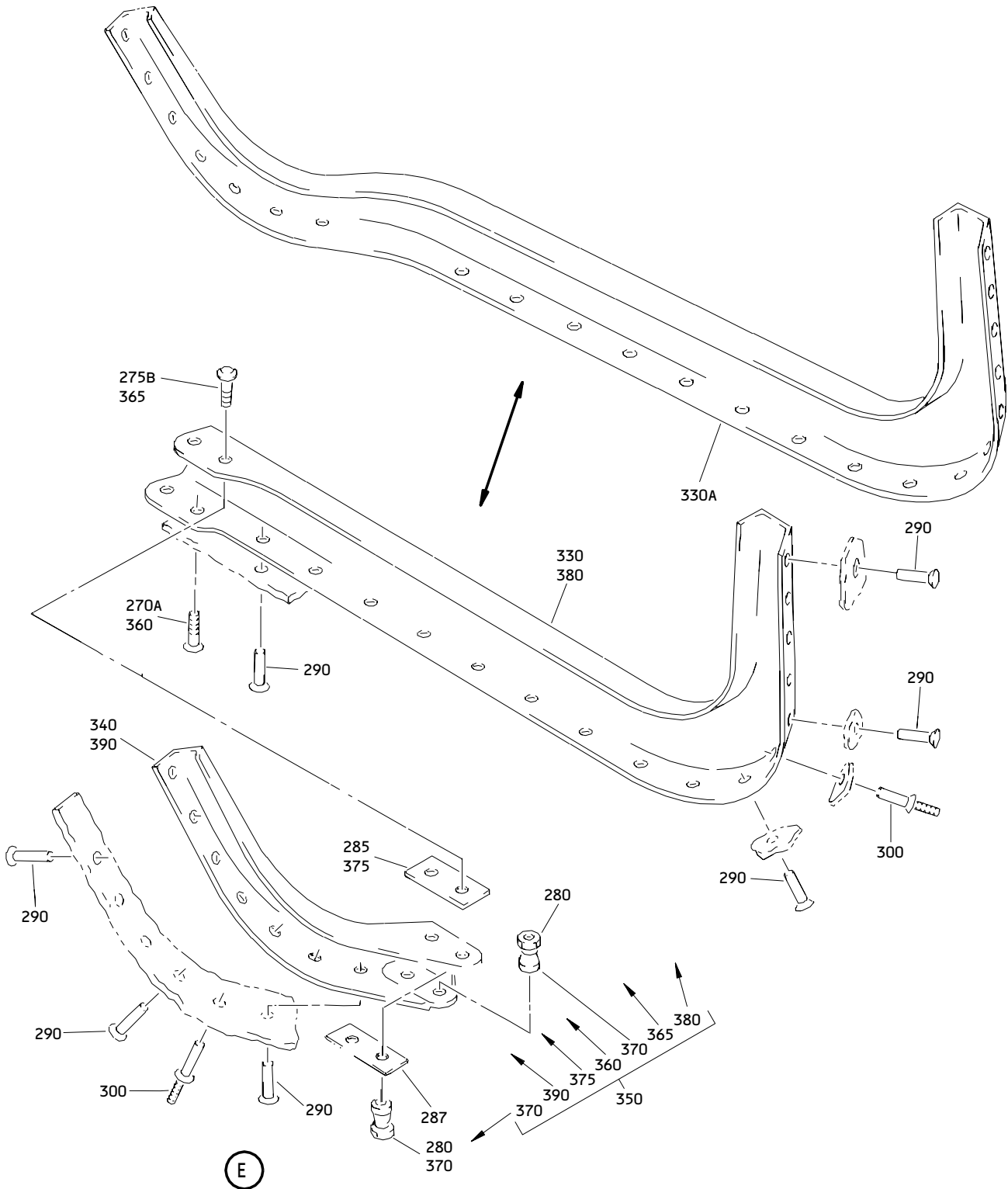
ILLUSTRATED PARTS LIST  
01.1 Page 1016  
Nov 01/02



Outboard Trailing Edge Flap No. 1 Mid Fairing Assembly  
Figure 1 (Sheet 3)

**57-26-31**

ILLUSTRATED PARTS LIST  
01.1 Page 1017  
Nov 01/02



Outboard Trailing Edge Flap No. 1 Mid Fairing Assembly  
 Figure 1 (Sheet 4)

**57-26-31**

ILLUSTRATED PARTS LIST  
 01.1 Page 1018  
 Nov 01/02


**BOEING**  
 COMPONENT  
 MAINTENANCE MANUAL

FIG. & ITEM	PART NO.	AIRLINE PART NUMBER	NOMENCLATURE 1234567	EFF CODE	QTY PER ASSY
01-					
-1	113T1821-1SP		DELETED		
-1A	113T1821-15SP		DELETED		
-1B	113T1821-29SP		FAIRING ASSY-OUTBD TE FLAP NO. 1 MID (LH)	A	RF
-1C	113T1821-31		FAIRING ASSY-OUTBD TE FLAP NO. 1 MID (VARIABLE) (LH)	C	RF
-1D	113T1821-35SP		FAIRING ASSY-OUTBD TE FLAP NO. 1 MID (LH) (FOR DETAILS SEE FIG.2)	E	RF
-1E	113T1821-37		FAIRING ASSY-OUTBD TE FLAP NO. 1 MID (VARIABLE) (LH)	F	RF
-1F	113T1821-39SP		FAIRING ASSY-OUTBD TE FLAP NO. 1 MID (LH)	J	RF
R -1G	113T1821-41		FAIRING ASSY-OUTBD TE FLAP NO. 1 MID (VARIABLE) (LH)	L	RF
R -1H	113T1821-43		FAIRING ASSY-OUTBD TE FLAP NO. 1 MID (VARIABLE) (LH)	N	RF
R -1J	113T1821-45G		FAIRING ASSY-OUTBD TE FLAP NO. 1 MID (LH)	Q	RF
R -1K	113T1821-45SP		FAIRING ASSY-OUTBD TE FLAP NO. 1 MID (LH)	S	RF
-5	113T1821-2SP		DELETED		
-5A	113T1821-16SP		DELETED		
-5B	113T1821-30SP		FAIRING ASSY-OUTBD TE FLAP NO. 8 MID (RH)	B	RF
-5C	113T1821-32		FAIRING ASSY-OUTBD TE FLAP NO. 8 MID (VARIABLE) (RH)	D	RF
-5D	113T1821-36SP		FAIRING ASSY-OUTBD TE FLAP NO. 8 MID (RH) (FOR DETAILS SEE FIG. 2)	G	RF
-5E	113T1821-38		FAIRING ASSY-OUTBD TE FLAP NO. 8 MID (VARIABLE) (RH)	H	RF
-5F	113T1821-40SP		FAIRING ASSY-OUTBD TE FLAP NO. 8 MID (RH)	K	RF
R -5G	113T1821-42		FAIRING ASSY-OUTBD TE FLAP NO. 8 MID (VARIABLE) (RH)	M	RF
R -5H	113T1821-44		FAIRING ASSY-OUTBD TE FLAP NO. 8 MID (VARIABLE) (RH)	P	RF
R -5J	113T1821-46G		FAIRING ASSY-OUTBD TE FLAP NO. 8 MID (RH)	R	RF
R -5K	113T1821-46SP		FAIRING ASSY-OUTBD TE FLAP NO. 8 MID (RH)	T	RF

57-26-31

 ILLUSTRATED PARTS LIST  
 01.1 Page 1019  
 Nov 01/02

FIG. & ITEM	PART NO.	AIRLINE PART NUMBER	NOMENCLATURE 1234567	EFF CODE	QTY PER ASSY
01-8	113T1821-24		.PLUG	A-D,F ,H-P	1
10	113T1821-12		DELETED		
10A	113T1821-27		.SEAL- (MFD FROM EXTR RUBBER 10-60745-718 30.0 IN.)	A,C,F ,J,L, N,Q,S	1
-10B	113T1821-28		.SEAL- (MFD FROM EXTR RUBBER 10-60745-718 30.0 IN)	B,D,H ,K,M, P,R,T	1
12	149T6906-53		DELETED		
R 12A	113T1821-34		.PLUG- (MFD FROM SH RUBBER BMS 1-23 .875 DIA X 2.7)	A-D,F ,H-T	2
15	113T1821-11		DELETED		
15A	113T1821-25		.RETAINER	A,C,F ,J,L, N,Q,S	1
-15B	113T1821-26		.RETAINER	B,D,H ,K,M, P,R,T	1
20	BACR15BA5AD		ATTACHING PARTS .RIVET- (SIZE DETERMINE ON INST) -----*-----	A-D,F ,H-T	8
25	113T1844-1		.CLIP	A,C,F ,J,L, N,Q,S	1
-30	113T1844-2		.CLIP	B,D,H ,K,M, P,R,T	1
35	BACR15BB6AD		ATTACHING PARTS .RIVET- (SIZE DETERMINE ON INST)	A-D,F ,H-T	2

57-26-31

 ILLUSTRATED PARTS LIST  
 01.1 Page 1020  
 Nov 01/02


**BOEING**  
 COMPONENT  
 MAINTENANCE MANUAL

FIG. & ITEM	PART NO.	AIRLINE PART NUMBER	NOMENCLATURE 1234567	EFF CODE	QTY PER ASSY
01-40	BACB30NM3K3		.BOLT	A-D, F ,H-T	2
45	AN960XC10L		.WASHER	A-D, F ,H-T	2
50	H10-3BAC		.NUT- (V15653) (SPEC BACN10JC3) (OPT NS202101-02 (V80539)) (OPT RMLH9075-3W (V72962)) (OPT T6S1032J (V71087)) (OPT VN303A02 (V92215)) (OPT 96-02 (V80539)) (OPT BRH10A3 (V52828)) -----*	A-D, F ,H-T	2
55	113T1821-3		DELETED		
55A	113T1821-17		.BEAM- (OPT ITEM 55B)	A, C, F ,J, L, N, Q, S	1
55B	113T1821-19		.BEAM ASSY- (OPT ITEM 55A)	A, C, F ,J, L, N, Q, S	1
-60	113T1821-4		DELETED		
-60A	113T1821-18		.BEAM- (OPT ITEM 60B)	B, D, H ,K, M, P, R, T	1
-60B	113T1821-20		.BEAM ASSY- (OPT ITEM 60A)	B, D, H ,K, M, P, R, T	1
65	BACB30NN3K3		ATTACHING PARTS .BOLT	A-D, F ,H-P	10
70	BACB30NN3K5		DELETED		
73	BACS40R08B08F		DELETED		
75	AN960XC10L		.WASHER	A-D, F ,H-T	10

57-26-31

ILLUSTRATED PARTS LIST

01.1

Page 1021

Nov 01/02

FIG. & ITEM	PART NO.	AIRLINE PART NUMBER	NOMENCLATURE 1234567	EFF CODE	QTY PER ASSY
01-80	H10-3BAC		.NUT- (V15653) (SPEC BACN10JC3) (OPT NS202101-02 (V80539)) (OPT RMLH9075-3W (V72962)) (OPT T6S1032J (V71087)) (OPT VN303A02 (V92215)) (OPT 96-02 (V80539)) (OPT BRH10A3 (V52828)) -----*	A-D,F ,H-T	10
81	BACR15BA6AD		..RIVET- (SIZE DETERMINE ON INST) (USED ON ITEMS 55B, 60B)	A-D,F ,H-T	5
82	113T1821-23		..CHANNEL- (USED ON ITEMS 55B, 60B)	A-D,F ,H-T	1
83	113T1821-21		..BEAM- (USED ON ITEM 55B)	A,C,F ,J,L, N,Q,S	1
-84	113T1821-22		..BEAM- (USED ON ITEM 60B)	B,D,H ,K,M, P,R,T	1
85	113T1821-13		.SEAL- (MFD FROM EXTR RUBBER 10-60754-718 17.00 IN.)	A-D,F ,H-T	1
87	149T6906-53		DELETED		
R 87A	113T1821-34		.PLUG- (MFD FROM SH RUBBER BMS 1-23 .875 DIA X 2.7)	A-D,F ,H-T	2
90	113T1821-5		.RETAINER	A,C,F ,J,L, N,Q,S	1
-95	113T1821-6		.RETAINER	B,D,H ,K,M, P,R,T	1
			ATTACHING PARTS		

57-26-31

 ILLUSTRATED PARTS LIST  
 01.1 Page 1022  
 Nov 01/02

**BOEING**  
 COMPONENT  
 MAINTENANCE MANUAL

FIG. & ITEM	PART NO.	AIRLINE PART NUMBER	NOMENCLATURE 1234567	EFF CODE	QTY PER ASSY
01- 100 100A	BACB30NN3K5 BACB30NN3K3		DELETED .BOLT	A-D,F H-T	6
105	AN960XC10L		.WASHER	A-D,F H-T	6
110	H10-3BAC		.NUT- (V15653) (SPEC BACN10JC3) (OPT NS202101-02 (V80539)) (OPT RMLH9075-3W (V72962)) (OPT T6S1032J (V71087)) (OPT VN303A02 (V92215)) (OPT 96-02 (V80539)) (OPT BRH10A3 (V52828))	A-D,F H-T	6
115	BACJ40A20-5		-----*----- . JUMPER ASSY	A-D,F H-T	1
120	HL448UC6-4		ATTACHING PARTS .BOLT- (V56878) (SPEC BACB30MB6A4) (OPT HL448UC6-4 (V73197)) (OPT HL448UC6-4 (V92215)) (OPT HL448UC6-4 (V97928)) (OPT 69308-6A4 (V56878)) (OPT HL448UC6-4 (V80539)) (OPT HL448UC6-4 (V08524)) (OPT HL448UC6-4 (V9N513)) (OPT WC4486-4 (V60516))	A-D,F H-T	1

**57-26-31**

ILLUSTRATED PARTS LIST  
 01.1 Page 1023  
 Nov 01/02



FIG. & ITEM	PART NO.	AIRLINE PART NUMBER	NOMENCLATURE 1234567	EFF CODE	QTY PER ASSY
01-123	HL448UC6-5		.BOLT- (V56878) (SPEC BACB30MB6A5) (OPT HL448UC6-5 (V73197)) (OPT HL448UC6-5 (V92215)) (OPT HL448UC6-5 (V97928)) (OPT 69308-6A5 (V56878)) (OPT HL448UC6-5 (V80539)) (OPT HL448UC6-5 (V08524)) (OPT HL448UC6-5 (V9N513)) (OPT WC4486-5 (V60516))	A-D,F ,H-T	1
125	HL1187-6		.COLLAR- (V73197) (SPEC BACC30X6) (OPT HL87-6 (V73197)) (OPT HL87-6 (V92215)) (OPT HL1187-6 (V56878)) (OPT HL1187-6 (V92215)) (OPT HL87-6 (V56878)) (OPT HL1187-6 (V5M902))	A-D,F ,H-T	2
130	AN960-10L		.WASHER  -----*-----	A-D,F ,H-T	6
135	113T1833-1		DELETED		
135A	113T1833-17		DELETED		
135B	113T1833-33		.FITTING ASSY-HINGE	A,C,F ,J,L, N,Q,S	1
-140	113T1833-2		DELETED		
-140A	113T1833-18		DELETED		

57-26-31

ILLUSTRATED PARTS LIST

01.1

Page 1024

Nov 01/02


**BOEING**  
 COMPONENT  
 MAINTENANCE MANUAL

FIG. & ITEM	PART NO.	AIRLINE PART NUMBER	NOMENCLATURE 1234567	EFF CODE	QTY PER ASSY
01- -140B	113T1833-34		.FITTING ASSY-HINGE	B,D,H ,K,M, P,R,T	1
145	113T1833-5		DELETED		
145A	113T1833-21		DELETED		
145B	113T1833-37		DELETED		
145C	113T1833-21		.FITTING ASSY-HINGE	A,C,F ,J,L, N,Q,S	1
-150	113T1833-6		DELETED		
-150A	113T1833-22		DELETED		
-150B	113T1833-38		DELETED		
-150C	113T1833-22		.FITTING ASSY-HINGE	B,D,H ,K,M, P,R,T	1
160	HL13VAZ8-7		ATTACHING PARTS .BOLT- (V56878) (SPEC BACB30NY8K7) (OPT HL13VAZ8-7 (V73197)) (OPT HL13VAZ8-7 (V92215)) (OPT HL13VAZ8-7 (V97928)) (OPT L801-8K7 (V06725)) (OPT HL13VAZ8-7 (V08524)) (OPT HL13V7 (V06725)) (OPT HL13VAZ8-7 (V17446))	A-D,F ,H-T	16

57-26-31

ILLUSTRATED PARTS LIST

01.1

Page 1025

Nov 01/02

FIG. & ITEM	PART NO.	AIRLINE PART NUMBER	NOMENCLATURE 1234567	EFF CODE	QTY PER ASSY
01-165	HL79-8		.COLLAR- (V56878) (SPEC BACC30M8) (OPT HL79-8 (V73197)) (OPT HL79-8 (V92215)) (OPT 66014-8 (V56878)) (OPT HL79-8 (V5M902))	A-D,F ,H-T	16
170	HL10VAZ6-3		.BOLT- (V60516) (SPEC BACB30MY6K3) (OPT B30MY6K3 (V97928))	A-D	8
-170A -170B	HL10VAZ6-5 HL10VAZ6-5		DELETED .BOLT- (V60516) (SPEC BACB30MY6K5) (OPT B30MY6K5 (V97928))	F,H-T	8
175	HL79-6		.COLLAR- (V56878) (SPEC BACC30M6) (OPT HL79-6 (V73197)) (OPT HL79-6 (V92215)) (OPT 66014-6 (V56878)) (OPT HL79-6 (V5M902))	A-D	8

# 57-26-31

 ILLUSTRATED PARTS LIST  
 01.1 Page 1026  
 Nov 01/02


**BOEING**  
 COMPONENT  
 MAINTENANCE MANUAL

FIG. & ITEM	PART NO.	AIRLINE PART NUMBER	NOMENCLATURE 1234567	EFF CODE	QTY PER ASSY
01-177	BACS40R22B44F		.SHIM	A-D,F ,H-T	AR
179	BACS40R08B18F		.SHIM	A-D,F ,H-T	AR
180	MS15001-1		-----*----- ..FITTING	A-D,F ,H-T	1
185 185A	ABWEN05C ABWEN05VC		DELETED ..BEARING- (V50294) (SPEC BACB10EN05GC) (OPT AG5V29C (V15860))	A-D,F ,H-T	1
190 190A 190B	113T1833-3 113T1833-19 113T1833-35		DELETED DELETED ..FITTING- (USED ON ITEM 135B)	A,C,F ,J,L, N,Q,S	1
-191 -191A -191B	113T1833-4 113T1833-20 113T1833-36		DELETED DELETED ..FITTING- (USED ON ITEM 140B)	B,D,H ,K,M, P,R,T	1
193 193A 193B 193C	113T1833-7 113T1833-23 113T1833-39 113T1833-23		DELETED DELETED DELETED ..FITTING- (USED ON ITEM 145C)	A,C,F ,J,L, N,Q,S	1

57-26-31

 ILLUSTRATED PARTS LIST  
 01.1 Page 1027  
 Nov 01/02

FIG. & ITEM	PART NO.	AIRLINE PART NUMBER	NOMENCLATURE 1234567	EFF CODE	QTY PER ASSY
01-					
-194	113T1833-8		DELETED		
-194A	113T1833-24		DELETED		
-194B	113T1833-40		DELETED		
-194C	113T1833-24		..FITTING- (USED ON ITEM 150C)	B,D,H ,K,M, P,R,T	1
195	113T1821-9		.ANGLE	A,C,F ,J,L, N,Q,S	1
-200	113T1821-10		.ANGLE	B,D,H ,K,M, P,R,T	1
205	BACR15BA6AD		ATTACHING PARTS .RIVET- (SIZE DETERMINE ON INST)	A-D,F ,H-T	17
207	BACR15BB6AD		.RIVET- (SIZE DETERMINE ON INST)	A-D,F ,H-T	6
			-----*-----		
210	113T1830-1		.FITTING ASSY-SPRT	A-D,F ,H-T	1
212	113T1830-3		.FITTING ASSY	A,C,F ,J,L, N,Q,S	1
-213	113T1830-4		.FITTING ASSY	B,D,H ,K,M, P,R,T	1
215	HL13VAZ8-5		ATTACHING PARTS .BOLT- (V56878) (SPEC BACB30NY8K5) (OPT HL13VAZ8-5 (V73197)) (OPT HL13VAZ8-5 (V92215)) (OPT HL13VAZ8-5 (V97928)) (OPT L801-8K5 (V06725)) (OPT HL13VAZ8-5 (V08524)) (OPT HL13V5 (V06725)) (OPT HL13VAZ8-5 (V17446))	A-D,F ,H-T	8

57-26-31

 ILLUSTRATED PARTS LIST  
 01.1 Page 1028  
 Nov 01/02


**BOEING**  
 COMPONENT  
 MAINTENANCE MANUAL

FIG. & ITEM	PART NO.	AIRLINE PART NUMBER	NOMENCLATURE 1234567	EFF CODE	QTY PER ASSY
01-220	HL79-8		.COLLAR- (V56878) (SPEC BACC30M8) (OPT HL79-8 (V73197)) (OPT HL79-8 (V92215)) (OPT 66014-8 (V56878)) (OPT HL79-8 (V5M902)) -----*-----	A-D,F ,H-T	8
225	BACB28AM06B008A		..BUSHING	A-D,F ,H-T	1
230	BACB28AP04P008		..BUSHING	A-D,F ,H-T	1
235	113T1830-2		..FITTING-LINK (USED ON ITEM 210)	A-D,F ,H-T	1
237	113T1830-5		..FITTING-LINK (USED ON ITEM 212)	A,C,F ,J,L, N,Q,S	1
-238	113T1830-6		..FITTING-LINK (USED ON ITEM 213)	B,D,H ,K,M, P,R,T	1
240	113T1813-9		.DOOR	A,C,F ,J,L, N,Q,S	1
-245	113T1813-10		.DOOR	B,D,H ,K,M, P,R,T	1
R 250	BACB30LR3-3		ATTACHING PARTS .BOLT	A-D,F ,H-T	7

57-26-31

ILLUSTRATED PARTS LIST

01.1

Page 1029

Nov 01/02

FIG. & ITEM	PART NO.	AIRLINE PART NUMBER	NOMENCLATURE 1234567	EFF CODE	QTY PER ASSY
R	01-253	BACB30LR3-4	.BOLT  -----*-----	A-D,F ,H-T	1
	255	NS103191-02-2	.NUTPLATE- (V80539) (SPEC BACN10KE3B2) (OPT F51750-3-2 (V15653)) (OPT RMF9213-2-3 (V72962)) (OPT BRFR220A3-2 (V52825)) ATTACHING PARTS	A-D,F ,H-T	8
	260	BACR15BA3AD	.RIVET- (SIZE DETERMINE ON INST) -----*-----	A-D,F ,H-T	16
	265	113T1803-1	.CLIP	A-D,F ,H-T	1
	270	HL13VAZ8-6	DELETED		

# 57-26-31

 ILLUSTRATED PARTS LIST  
 01.1 Page 1030  
 Nov 01/02


**BOEING**  
 COMPONENT  
 MAINTENANCE MANUAL

FIG. & ITEM	PART NO.	AIRLINE PART NUMBER	NOMENCLATURE 1234567	EFF CODE	QTY PER ASSY
01-270A	HL11VAZ8-5		.BOLT- (V56878) (SPEC BACB30NW8K5) (OPT B30NW8K5 (V97928)) (OPT HL11VAZ8-5 (V73197)) (OPT HL11VAZ8-5 (V92215)) (OPT HL11VAZ8-5 (V97928)) (OPT L803-8K5 (V06725)) (OPT HL11VAZ8-5 (V0PTK6)) (OPT HL11VAZ8-5 (V60516)) (ITEMS 270A, 275B, 280, 285, 287, 330, 340 OPT TO ITEM 330A) (ITEMS 270A, 275B, 280, 285, 287, 335, 345 OPT TO ITEM 335A)	F,H-P	2
R -270B	HL11VAZ8-5		.BOLT- (V56878) (SPEC BACB30NW8K5) (OPT B30NW8K5 (V97928)) (OPT HL11VAZ8-5 (V73197)) (OPT HL11VAZ8-5 (V92215)) (OPT HL11VAZ8-5 (V97928)) (OPT L803-8K5 (V06725)) (OPT HL11VAZ8-5 (V0PTK6)) (OPT HL11VAZ8-5 (V60516)) (LIMITED)	A-D	2
275	BACB30MY8K		DELETED		
275A	HL10VAZ8-4		DELETED		

57-26-31

ILLUSTRATED PARTS LIST

01.1

Page 1031

Nov 01/02



FIG. & ITEM	PART NO.	AIRLINE PART NUMBER	NOMENCLATURE 1234567	EFF CODE	QTY PER ASSY
01-275B	HL10VAZ8-7		.BOLT- (V60516) (SPEC BACB30MY8K7) (OPT B30MY8K7 (V97928)) (ITEMS 270A, 275B, 280, 285, 287, 330, 340 OPT TO ITEM 330A) (ITEMS 270A, 275B, 280, 285, 287, 335, 345 OPT TO ITEM 335A)	F,H-P	2
R -275C	HL10VAZ8-7		.BOLT- (V60516) (SPEC BACB30MY8K7) (OPT B30MY8K7 (V97928)) (LIMITED)	A-D	2
280	HL79-8		.COLLAR- (V56878) (SPEC BACC30M8) (OPT HL79-8 (V73197)) (OPT HL79-8 (V92215)) (OPT 66014-8 (V56878)) (OPT HL79-8 (V5M902)) (ITEMS 270A, 275B, 280, 285, 287, 330, 340 OPT TO ITEM 330A) (ITEMS 270A, 275B, 280, 285, 287, 335, 345 OPT TO ITEM 335A)	F,H-P	4

# 57-26-31

 ILLUSTRATED PARTS LIST  
 01.1 Page 1032  
 Nov 01/02


**BOEING**  
 COMPONENT  
 MAINTENANCE MANUAL

FIG. & ITEM	PART NO.	AIRLINE PART NUMBER	NOMENCLATURE 1234567	EFF CODE	QTY PER ASSY
R 01-280A	HL79-8		.COLLAR- (V56878) (SPEC BACC30M8) (OPT HL79-8 (V73197)) (OPT HL79-8 (V92215)) (OPT 66014-8 (V56878)) (OPT HL79-8 (V5M902)) (LIMITED)	A-D	4
285	BACS40R10C20F		.SHIM- (ITEMS 270A, 275B, 280, 285, 287, 330, 340 OPT TO ITEM 330A) (ITEMS 270A, 275B, 280, 285, 287, 335, 345 OPT TO ITEM 335A)	F,H-P	1
R -285A	BACS40R10C20F		.SHIM- (LIMITED)	A-D	1
287	113T1821-33		.FILLER- (ITEMS 270A, 275B, 280, 285, 287, 330, 340 OPT TO ITEM 330A) (ITEMS 270A, 275B, 280, 285, 287, 335, 345 OPT TO ITEM 335A)	F,H-P	1
R -287A	113T1821-33		.FILLER- (LIMITED)	A-D	1

57-26-31

 ILLUSTRATED PARTS LIST  
 01.1 Page 1033  
 Nov 01/02

FIG. & ITEM	PART NO.	AIRLINE PART NUMBER	NOMENCLATURE 1234567	EFF CODE	QTY PER ASSY
01-290	BACR15BA6AD		.RIVET- (SIZE DETERMINE ON INST)	A-D,F ,H-T	33
295	NAS1399MW6-4		.RIVET	A-D,F ,H-T	2
300	NAS1399MW6-5		.RIVET	A-D,F ,H-T	2
305	113T1861-1		DELETED		
305A	113T1861-7		.BOND ASSY	A,C	1
-305B	113T1861-11		.BOND ASSY	F,J,L ,N,Q, S	1
-310	113T1861-2		DELETED		
-310A	113T1861-8		.BOND ASSY	B,D	1
-310B	113T1861-12		.BOND ASSY	H,K,M ,P,R, T	1
315	113T1861-3		DELETED		
-315A	113T1861-4		DELETED		
315B	113T1861-9		..CORE	A,C,F ,J,L, N,Q,S	1
-315C	113T1861-10		..CORE	B,D,H ,K,M, P,R,T	1
317	BACR15FT8AD5		.RIVET	A-D,F ,H-T	2
320	113T1838-1		DELETED		
320A	113T1838-3		.FRAME	A,C,F ,J,L, N,Q,S	1

# 57-26-31

 ILLUSTRATED PARTS LIST  
 01.1 Page 1034  
 Nov 01/02


**BOEING**  
 COMPONENT  
 MAINTENANCE MANUAL

FIG. & ITEM	PART NO.	AIRLINE PART NUMBER	NOMENCLATURE 1234567	EFF CODE	QTY PER ASSY
01-					
-325	113T1838-2		DELETED		
-325A	113T1838-4		.FRAME	B,D,H ,K,M, P,R,T	1
330	113T1836-1		.FRAME- (ITEMS 270A, 275B, 280, 285, 287, 330, 340 OPT TO ITEM 330A)	F,J,L ,N	1
330A	113T1823-1		.FRAME- (ITEMS 270A, 275B, 280, 285, 287, 330, 340 OPT TO ITEM 330A)	F,J,L ,N	1
R -330B	113T1836-1		.FRAME- (REPLD BY ITEM 330C)	A,C	1
R -330C	113T1823-1		.FRAME- (REPLS ITEM 330B)	A,C	1
R -330D	113T1823-1		.FRAME- (OPT ITEM 350)	Q,S	1
-335	113T1836-2		.FRAME- (ITEMS 270A, 275B, 280, 285, 287, 335, 345 OPT TO ITEM 335A)	H,K,M ,P	1
-335A	113T1823-2		.FRAME- (ITEMS 270A, 275B, 280, 285, 287, 335, 345 OPT TO ITEM 335A)	H,K,M ,P	1
R -335B	113T1836-2		.FRAME- (REPLD BY ITEM 335C)	B,D	1
R -335C	113T1823-2		.FRAME- (REPLS ITEM 335B)	B,D	1
R -335D	113T1823-2		.FRAME- (OPT ITEM 355)	R,T	1
340	113T1836-3		.FRAME- (ITEMS 270A, 275B, 280, 285, 287, 330, 340 OPT TO ITEM 330A)	F,J,L ,N	1
R -340A	113T1836-3		.FRAME- (LIMITED)	A,C	1
-345	113T1836-4		.FRAME- (ITEMS 270A, 275B, 280, 285, 287, 335, 345 OPT TO ITEM 335A)	H,K,M ,P	1

57-26-31

 ILLUSTRATED PARTS LIST  
 01.1 Page 1035  
 Nov 01/02

FIG. & ITEM	PART NO.	AIRLINE PART NUMBER	NOMENCLATURE 1234567	EFF CODE	QTY PER ASSY
R 01-345A	113T1836-4		.FRAME- (LIMITED)	B,D	1
R 350	113T1821-47		.KIT ASSY-SUB (OPT ITEM 330D)	Q,S	1
R -355	113T1821-48		.KIT ASSY-SUB (OPT ITEM 335D)	R,T	1
R 360	HL11VAZ8-5		..BOLT- (V56878) (SPEC BACB30NW8K5) (OPT B30NW8K5 (V97928)) (OPT HL11VAZ8-5 (V73197)) (OPT HL11VAZ8-5 (V92215)) (OPT HL11VAZ8-5 (V97928)) (OPT L803-8K5 (V06725)) (OPT HL11VAZ8-5 (V0PTK6)) (OPT HL11VAZ8-5 (V60516))	Q-T	2
R 365	HL10VAZ8-7		..BOLT- (V60516) (SPEC BACB30MY8K7) (OPT B30MY8K7 (V97928))	Q-T	2
R 370	HL79-8		..COLLAR- (V56878) (SPEC BACC30M8) (OPT HL79-8 (V73197)) (OPT HL79-8 (V92215)) (OPT 66014-8 (V56878)) (OPT HL79-8 (V5M902))	Q-T	4

# 57-26-31

 ILLUSTRATED PARTS LIST  
 01.1 Page 1036  
 Nov 01/02


**BOEING**  
 COMPONENT  
 MAINTENANCE MANUAL

FIG. & ITEM	PART NO.	AIRLINE PART NUMBER	NOMENCLATURE 1234567	EFF CODE	QTY PER ASSY
01-					
R 375	BACS40R10C20F		..SHIM	Q-T	1
R 380	113T1836-1		..FRAME	Q,S	1
R -385	113T1836-2		..FRAME	R,T	1
R 390	113T1836-3		..FRAME	Q,S	1
R -395	113T1836-4		..FRAME	R,T	1

- Item Not Illustrated

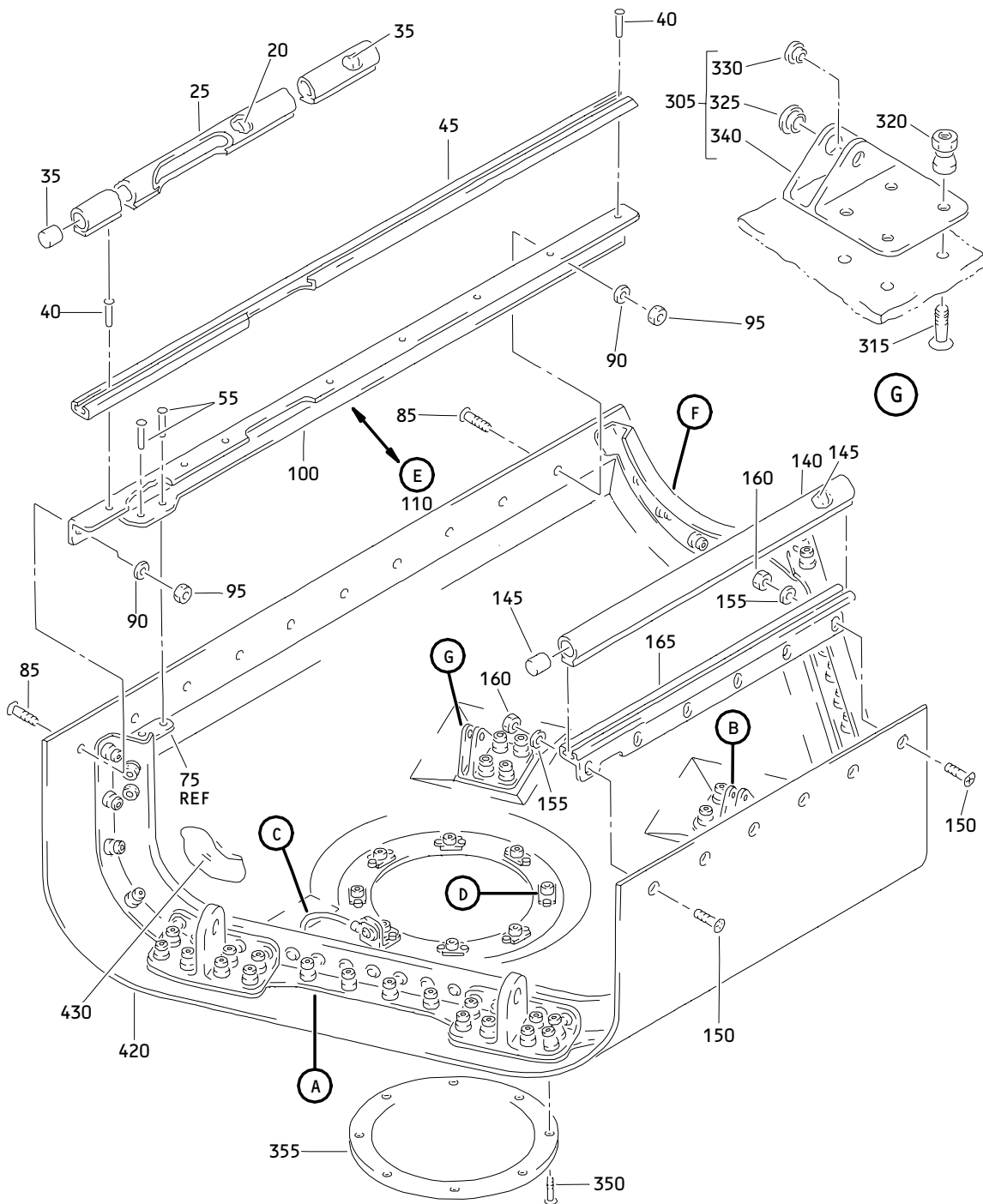
# 57-26-31

ILLUSTRATED PARTS LIST

01.1

Page 1037

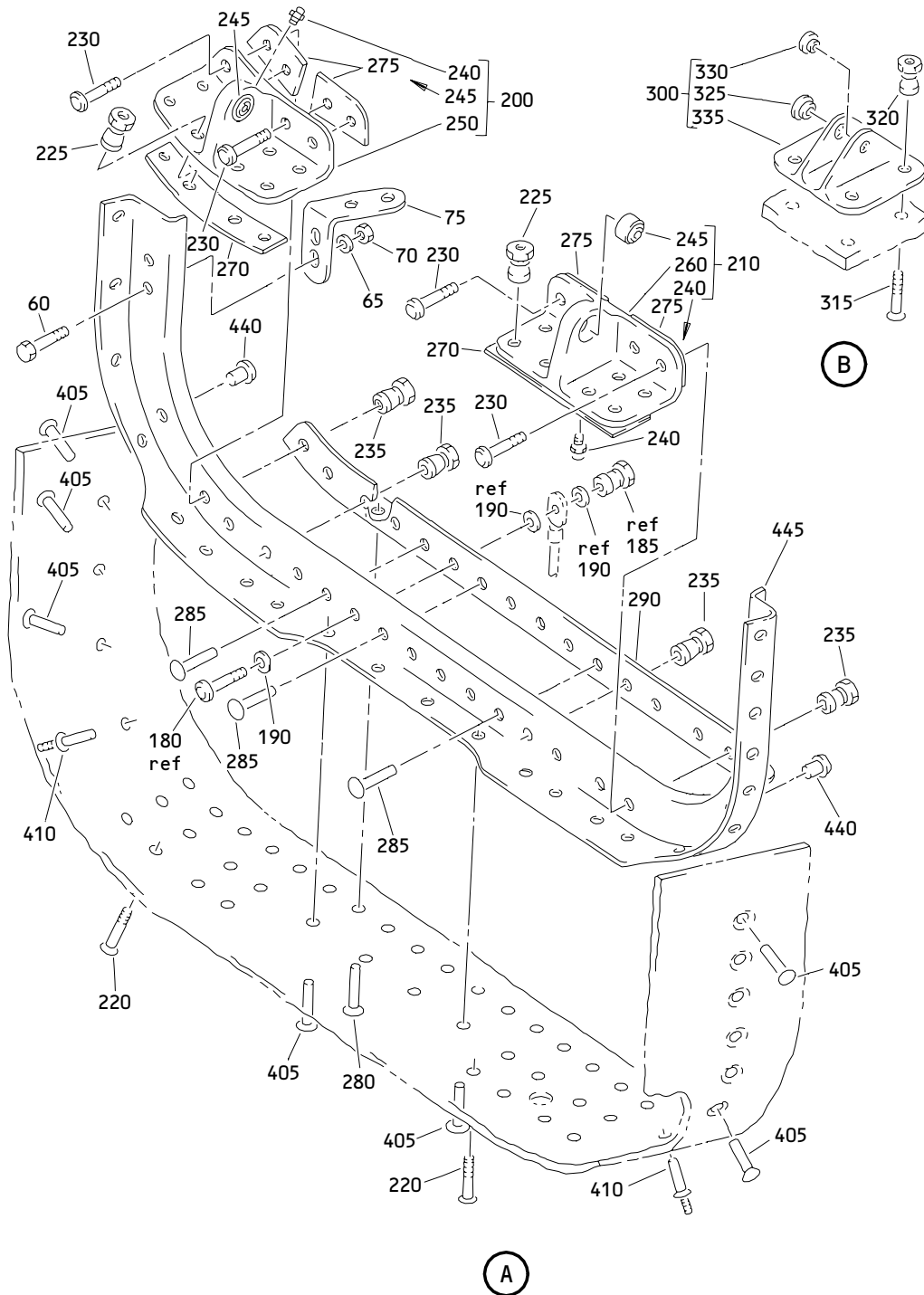
Nov 01/02



Outboard Trailing Edge Flap No. 1 Fairing Assembly  
 Figure 2 (Sheet 1)

**57-26-31**

ILLUSTRATED PARTS LIST  
 01.1 Page 1039  
 Nov 01/02

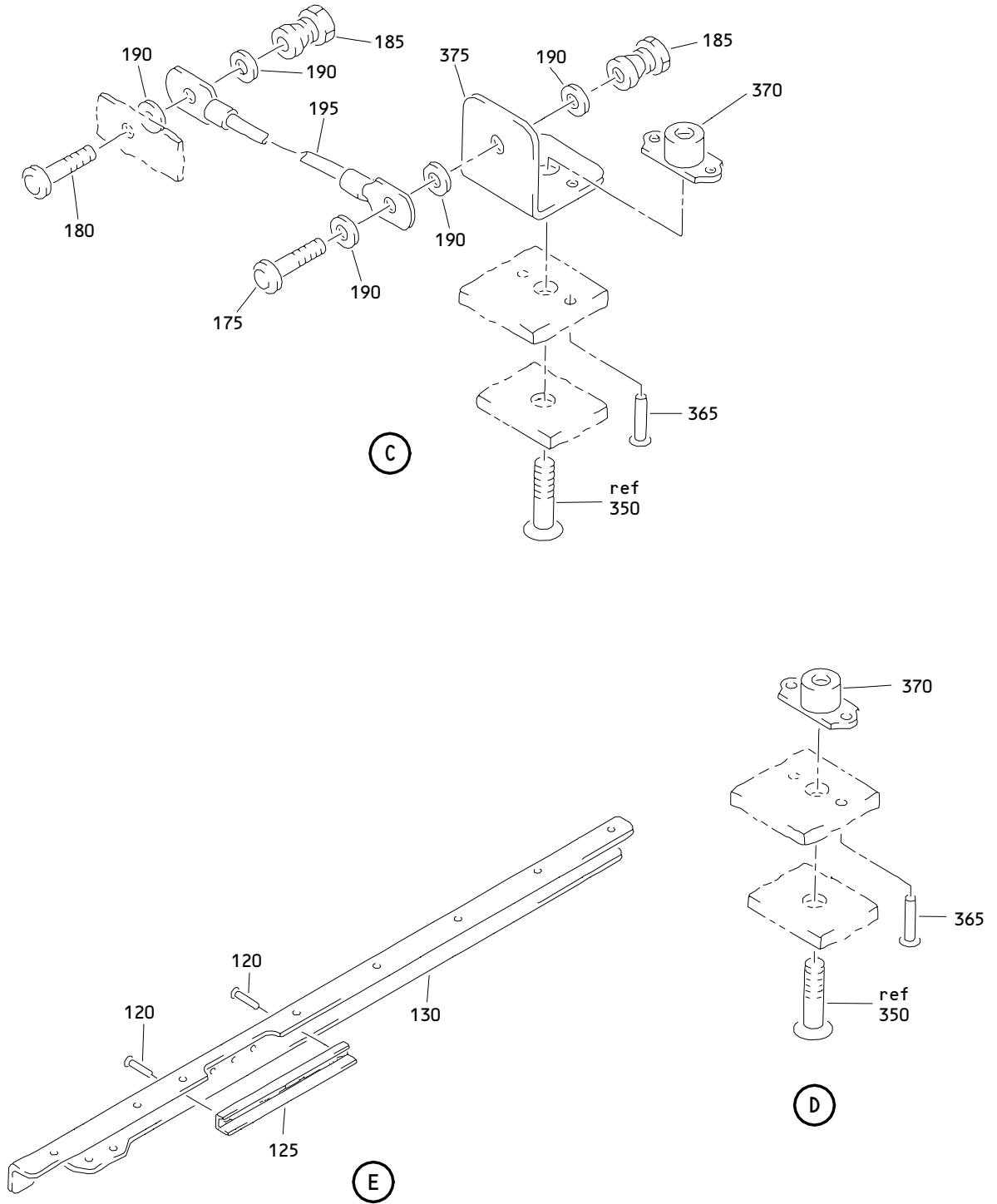


Outboard Trailing Edge Flap No. 1 Fairing Assembly  
 Figure 2 (Sheet 2)

**57-26-31**

ILLUSTRATED PARTS LIST  
 01.1 Page 1040  
 Nov 01/02

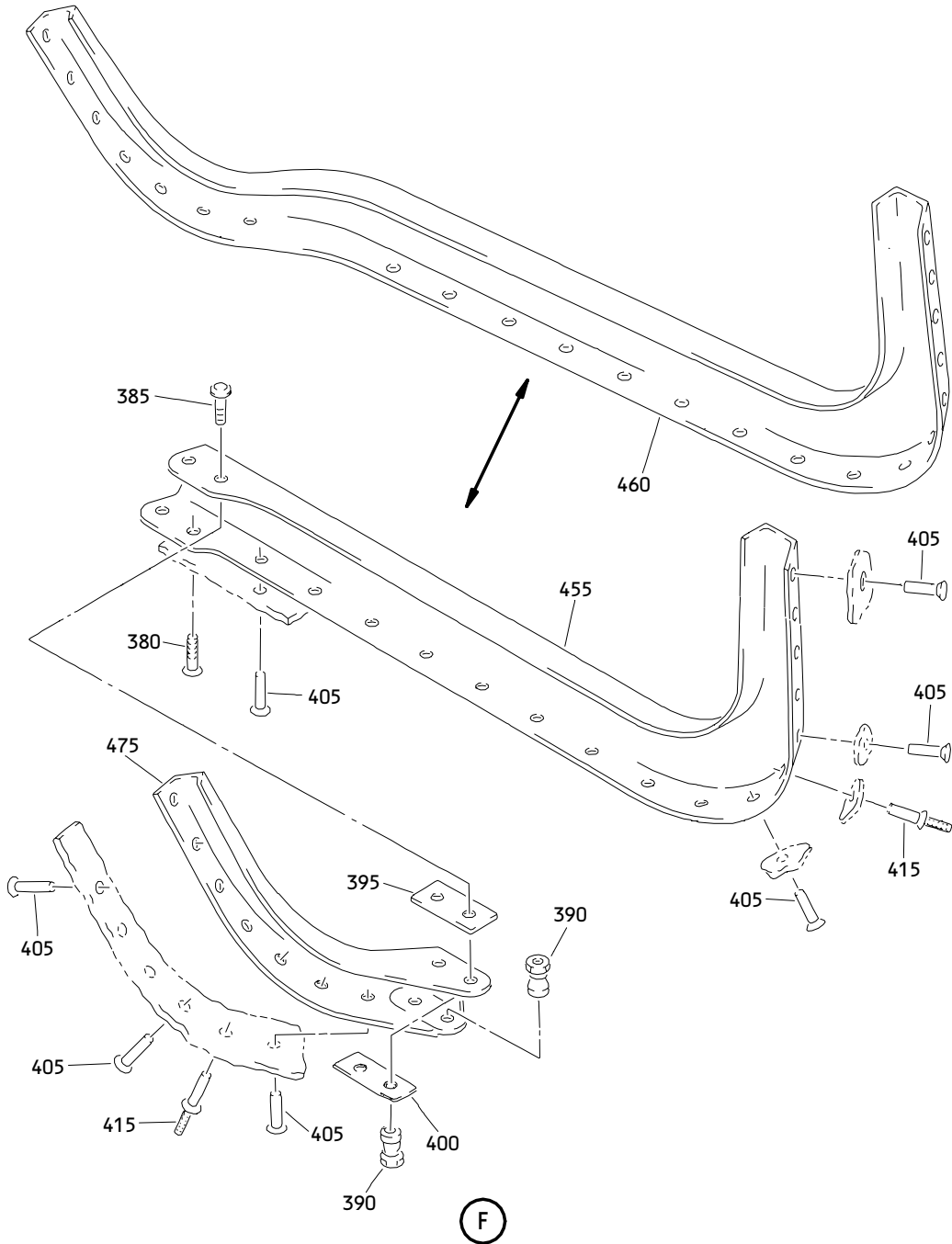




Outboard Trailing Edge Flap No. 1 Fairing Assembly  
Figure 2 (Sheet 3)

**57-26-31**

ILLUSTRATED PARTS LIST  
01.1 Page 1041  
Nov 01/02



Outboard Trailing Edge Flap No. 1 Fairing Assembly  
Figure 2 (Sheet 4)

**57-26-31**

ILLUSTRATED PARTS LIST  
01.1 Page 1042  
Nov 01/02


**BOEING**  
 COMPONENT  
 MAINTENANCE MANUAL

FIG. & ITEM	PART NO.	AIRLINE PART NUMBER	NOMENCLATURE 1234567	EFF CODE	QTY PER ASSY
02- -1	113T1821-35SP		FAIRING ASSY-OUTBD TE FLAP NO. 1 MID (LH)	E	RF
-1A	113T1821-37		DELETED		
-5	113T1821-36SP		FAIRING ASSY-OUTBD TE FLAP NO. 8 MID (RH)	G	RF
-5A	113T1821-38		DELETED		
-10	113T1821-5001		.FAIRING ASSY-	E	1
-10A	113T1821-5003		DELETED		
-15	113T1821-5002		.FAIRING ASSY-	G	1
-15A	113T1821-5004		DELETED		
20	113T1821-24		..PLUG	E,G	1
25	113T1821-27		..SEAL- (MFD FROM EXTR RUBBER 10-60745-718 30.0 IN.)	E	1
-30	113T1821-28		..SEAL- (MFD FROM EXTR RUBBER 10-60745-718 30.0 IN)	G	1
R 35	113T1821-34		..PLUG- (MFD FROM SH RUBBER BMS 1-23 .875 DIA X 2.7)	E,G	2
40	BACR15BA5AD		..RIVET- (SIZE DETERMINE ON INST)	E,G	8
45	113T1821-25		..RETAINER	E	1
-50	113T1821-26		..RETAINER	G	1
55	BACR15BB6AD		..RIVET- (SIZE DETERMINE ON INST)	E,G	2
60	BACB30NM3K3		..BOLT	E,G	2
65	AN960XC10L		..WASHER	E,G	2
70	H10-3BAC		..NUT- (V15653) (SPEC BACN10JC3) (OPT NS202101-02 (V80539)) (OPT RMLH9075-3W (V72962)) (OPT T6S1032J (V71087)) (OPT VN303A02 (V92215)) (OPT 96-02 (V80539)) (OPT BRH10A3 (V52828))	E,G	2

57-26-31

ILLUSTRATED PARTS LIST

01.1

Page 1043

Nov 01/02

FIG. & ITEM	PART NO.	AIRLINE PART NUMBER	NOMENCLATURE 1234567	EFF CODE	QTY PER ASSY
02-75	113T1844-1		..CLIP	E	1
-80	113T1844-2		..CLIP	G	1
85	BACB30NN3K3		..BOLT	E,G	10
90	AN960XC10L		..WASHER	E,G	10
95	H10-3BAC		..NUT- (V15653) (SPEC BACN10JC3) (OPT NS202101-02 (V80539)) (OPT RMLH9075-3W (V72962)) (OPT T6S1032J (V71087)) (OPT VN303A02 (V92215)) (OPT 96-02 (V80539)) (OPT BRH10A3 (V52828))	E,G	10
100	113T1821-17		..BEAM- (OPT ITEM 110)	E	1
-105	113T1821-18		..BEAM- (OPT ITEM 115)	G	1
110	113T1821-19		..BEAM ASSY- (OPT ITEM 100)	E	1
-115	113T1821-20		..BEAM ASSY- (OPT ITEM 105)	G	1
120	BACR15BA6AD		...RIVET- (SIZE DETERMINE ON INST)	E,G	5
125	113T1821-23		...CHANNEL	E,G	1
130	113T1821-21		...BEAM	E	1
-135	113T1821-22		...BEAM	G	1
140	113T1821-13		..SEAL- (MFD FROM EXTR RUBBER 10-60754-718 17.00 IN.)	E,G	1

# 57-26-31

 ILLUSTRATED PARTS LIST  
 01.1 Page 1044  
 Nov 01/02

**BOEING**  
 COMPONENT  
 MAINTENANCE MANUAL

FIG. & ITEM	PART NO.	AIRLINE PART NUMBER	NOMENCLATURE 1234567	EFF CODE	QTY PER ASSY
R 02-145	113T1821-34		..PLUG- (MFD FROM SH RUBBER BMS 1-23 .875 DIA X 2.7)	E,G	2
150	BACB30NN3K3		..BOLT	E,G	6
155	AN960XC10L		..WASHER	E,G	6
160	H10-3BAC		..NUT- (V15653) (SPEC BACN10JC3) (OPT NS202101-02 (V80539)) (OPT RMLH9075-3W (V72962)) (OPT T6S1032J (V71087)) (OPT VN303A02 (V92215)) (OPT 96-02 (V80539)) (OPT BRH10A3 (V52828))	E,G	6
165	113T1821-5		..RETAINER	E	1
-170	113T1821-6		..RETAINER	G	1
175	HL448UC6-4		..BOLT- (V56878) (SPEC BACB30MB6A4) (OPT HL448UC6-4 (V73197)) (OPT HL448UC6-4 (V92215)) (OPT HL448UC6-4 (V97928)) (OPT 69308-6A4 (V56878)) (OPT HL448UC6-4 (V80539)) (OPT HL448UC6-4 (V08524)) (OPT HL448UC6-4 (V9N513)) (OPT WC4486-4 (V60516))	E,G	1

**57-26-31**

ILLUSTRATED PARTS LIST  
 01.1 Page 1045  
 Nov 01/02

FIG. & ITEM	PART NO.	AIRLINE PART NUMBER	NOMENCLATURE 1234567	EFF CODE	QTY PER ASSY
02-180	HL448UC6-5		..BOLT- (V56878) (SPEC BACB30MB6A5) (OPT HL448UC6-5 (V73197)) (OPT HL448UC6-5 (V92215)) (OPT HL448UC6-5 (V97928)) (OPT 69308-6A5 (V56878)) (OPT HL448UC6-5 (V80539)) (OPT HL448UC6-5 (V08524)) (OPT HL448UC6-5 (V9N513)) (OPT WC4486-5 (V60516))	E,G	1
185	HL1187-6		..COLLAR- (V73197) (SPEC BACC30X6) (OPT HL87-6 (V73197)) (OPT HL87-6 (V92215)) (OPT HL1187-6 (V56878)) (OPT HL1187-6 (V92215)) (OPT HL87-6 (V56878)) (OPT HL1187-6 (V5M902))	E,G	2
190	AN960-10L		..WASHER	E,G	6
195	BACJ40A20-5		..JUMPER ASSY	E,G	1
200	113T1833-33		..FITTING ASSY-HINGE	E	1
-205	113T1833-34		..FITTING ASSY-HINGE	G	1
210	113T1833-21		..FITTING ASSY-HINGE	E	1
-215	113T1833-22		..FITTING ASSY-HINGE	G	1

# 57-26-31

ILLUSTRATED PARTS LIST

01.1

Page 1046

Nov 01/02


**BOEING**  
 COMPONENT  
 MAINTENANCE MANUAL

FIG. & ITEM	PART NO.	AIRLINE PART NUMBER	NOMENCLATURE 1234567	EFF CODE	QTY PER ASSY
02-					
220	HL13VAZ8-7		ATTACHING PARTS ..BOLT- (V56878) (SPEC BACB30NY8K7) (OPT HL13VAZ8-7 (V73197)) (OPT HL13VAZ8-7 (V92215)) (OPT HL13VAZ8-7 (V97928)) (OPT L801-8K7 (V06725)) (OPT HL13VAZ8-7 (V08524)) (OPT HL13V7 (V06725)) (OPT HL13VAZ8-7 (V17446))	E,G	16
225	HL79-8		..COLLAR- (V56878) (SPEC BACC30M8) (OPT HL79-8 (V73197)) (OPT HL79-8 (V92215)) (OPT 66014-8 (V56878)) (OPT HL79-8 (V5M902))	E,G	16
230	HL10VAZ6-5		..BOLT- (V60516) (SPEC BACB30MY6K5) (OPT B30MY6K5 (V97928))	E,G	8

57-26-31

 ILLUSTRATED PARTS LIST  
 01.1 Page 1047  
 Nov 01/02

FIG. & ITEM	PART NO.	AIRLINE PART NUMBER	NOMENCLATURE 1234567	EFF CODE	QTY PER ASSY
02-235	HL79-6		..COLLAR- (V56878) (SPEC BACC30M6) (OPT HL79-6 (V73197)) (OPT HL79-6 (V92215)) (OPT 66014-6 (V56878)) (OPT HL79-6 (V5M902)) -----*-----	E,G	8
240	MS15001-1		...FITTING	E,G	1
245	ABWEN05VC		...BEARING- (V50294) (SPEC BACB10EN05GC) (OPT AG5V29C (V15860))	E,G	1
250	113T1833-35		...FITTING- (USED ON ITEM 200)	E	1
-255	113T1833-36		...FITTING- (USED ON ITEM 205)	G	1
260	113T1833-23		...FITTING- (USED ON ITEM 210)	E	1
-265	113T1833-24		...FITTING- (USED ON ITEM 215)	G	1
270	BACS40R22B44F		..SHIM	E,G	AR
275	BACS40R08B18F		..SHIM	E,G	AR
280	BACR15BA6AD		..RIVET- (SIZE DETERMINE ON INST)	E,G	17

# 57-26-31

ILLUSTRATED PARTS LIST

01.1

Page 1048

Nov 01/02




**BOEING**  
 COMPONENT  
 MAINTENANCE MANUAL

FIG. & ITEM	PART NO.	AIRLINE PART NUMBER	NOMENCLATURE 1234567	EFF CODE	QTY PER ASSY
02-285	BACR15BB6AD		..RIVET- (SIZE DETERMINE ON INST)	E,G	6
290	113T1821-9		..ANGLE	E	1
-295	113T1821-10		..ANGLE	G	1
300	113T1830-1		..FITTING ASSY-SPRT	E,G	1
305	113T1830-3		..FITTING ASSY	E	1
-310	113T1830-4		..FITTING ASSY ATTACHING PARTS	G	1
315	HL13VAZ8-5		..BOLT- (V56878) (SPEC BACB30NY8K5) (OPT HL13VAZ8-5 (V73197)) (OPT HL13VAZ8-5 (V92215)) (OPT HL13VAZ8-5 (V97928)) (OPT L801-8K5 (V06725)) (OPT HL13VAZ8-5 (V08524)) (OPT HL13V5 (V06725)) (OPT HL13VAZ8-5 (V17446))	E,G	8
320	HL79-8		..COLLAR- (V56878) (SPEC BACC30M8) (OPT HL79-8 (V73197)) (OPT HL79-8 (V92215)) (OPT 66014-8 (V56878)) (OPT HL79-8 (V5M902)) -----*	E,G	8

57-26-31

ILLUSTRATED PARTS LIST

01.1

Page 1049

Nov 01/02

FIG. & ITEM	PART NO.	AIRLINE PART NUMBER	NOMENCLATURE 1234567	EFF CODE	QTY PER ASSY
02-					
325	BACB28AM06B008A		...BUSHING	E,G	1
330	BACB28AP04P008		...BUSHING	E,G	1
335	113T1830-2		...FITTING-LINK (USED ON ITEM 300)	E,G	1
340	113T1830-5		...FITTING-LINK (USED ON ITEM 305)	E	1
-345	113T1830-6		...FITTING-LINK (USED ON ITEM 310)	G	1
R	350	BACB30LR3-3	..BOLT	E,G	7
R	353	BACB30LR3-4	..BOLT	E,G	1
	355	113T1813-9	..DOOR	E	1
	-360	113T1813-10	..DOOR	G	1
	365	BACR15BA3AD	..RIVET- (SIZE DETERMINE ON INST)	E,G	16
	370	NS103191-02-2	..NUTPLATE- (V80539) (SPEC BACN10KE3B2) (OPT F51750-3-2 (V15653)) (OPT RMF9213-2-3 (V72962)) (OPT BRFR220A3-2 (V52825))	E,G	8

# 57-26-31

 ILLUSTRATED PARTS LIST  
 01.1 Page 1050  
 Nov 01/02


**BOEING**  
 COMPONENT  
 MAINTENANCE MANUAL

FIG. & ITEM	PART NO.	AIRLINE PART NUMBER	NOMENCLATURE 1234567	EFF CODE	QTY PER ASSY
02- 375 380	113T1803-1 HL11VAZ8-5		..CLIP ..BOLT- (V56878) (SPEC BACB30NW8K5) (OPT B30NW8K5 (V97928)) (OPT HL11VAZ8-5 (V73197)) (OPT HL11VAZ8-5 (V92215)) (OPT HL11VAZ8-5 (V97928)) (OPT L803-8K5 (V06725)) (OPT HL11VAZ8-5 (V0PTK6)) (OPT HL11VAZ8-5 (V60516)) (ITEMS 380, 385, 390, 395, 400, 455, 475 OPT TO ITEM 460) (ITEMS 380, 385, 390, 395, 400, 465, 480 OPT TO ITEM 470)	E,G E,G	1 2
385	HL10VAZ8-7		..BOLT- (V60516) (SPEC BACB30MY8K7) (OPT B30MY8K7 (V97928)) (ITEMS 380, 385, 390, 395, 400, 455, 475 OPT TO ITEM 460) (ITEMS 380, 385, 390, 395, 400, 465, 480 OPT TO ITEM 470)	E,G	2

57-26-31

 ILLUSTRATED PARTS LIST  
 01.1 Page 1051  
 Nov 01/02

FIG. & ITEM	PART NO.	AIRLINE PART NUMBER	NOMENCLATURE 1234567	EFF CODE	QTY PER ASSY
02-390	HL79-8		..COLLAR- (V56878) (SPEC BACC30M8) (OPT HL79-8 (V73197)) (OPT HL79-8 (V92215)) (OPT 66014-8 (V56878)) (OPT HL79-8 (V5M902)) (ITEMS 380, 385, 390, 395, 400, 455, 475 OPT TO ITEM 460) (ITEMS 380, 385, 390, 395, 400, 465, 480 OPT TO ITEM 470)	E,G	4
395	BACS40R10C20F		..SHIM- (ITEMS 380, 385, 390, 395, 400, 455, 475 OPT TO ITEM 460) (ITEMS 380, 385, 390, 395, 400, 465, 480 OPT TO ITEM 470)	E,G	1
400	113T1821-33		..FILLER- (ITEMS 380, 385, 390, 395, 400, 455, 475 OPT TO ITEM 460) (ITEMS 380, 385, 390, 395, 400, 465, 480 OPT TO ITEM 470)	E,G	1
405	BACR15BA6AD		..RIVET- (SIZE DETERMINE ON INST)	E,G	33
410	NAS1399MW6-4		..RIVET	E,G	2
415	NAS1399MW6-5		..RIVET	E,G	2
420	113T1861-7		..BOND ASSY-	E	1
-420A	113T1861-11		DELETED		
-425	113T1861-8		..BOND ASSY-	G	1
-425A	113T1861-12		DELETED		
430	113T1861-9		...CORE	E	1
-435	113T1861-10		...CORE	G	1
440	BACR15FT8AD5		..RIVET	E,G	2
445	113T1838-3		..FRAME	E	1
-450	113T1838-4		..FRAME	G	1

57-26-31

ILLUSTRATED PARTS LIST

01.1

Page 1052

Nov 01/02


**BOEING**  
 COMPONENT  
 MAINTENANCE MANUAL

FIG. & ITEM	PART NO.	AIRLINE PART NUMBER	NOMENCLATURE 1234567	EFF CODE	QTY PER ASSY
02-455	113T1836-1		..FRAME (ITEMS 380, 385, 390, 395, 400, 455, 475 OPT TO ITEM 460)	E	1
460	113T1823-1		..FRAME (ITEMS 380, 385, 390, 395, 400, 455, 475 OPT TO ITEM 460)	E	1
-465	113T1836-2		..FRAME (ITEMS 380, 385, 390, 395, 400, 465, 480 OPT TO ITEM 470)	G	1
-470	113T1823-2		..FRAME (ITEMS 380, 385, 390, 395, 400, 465, 480 OPT TO ITEM 470)	G	1
475	113T1836-3		..FRAME (ITEMS 380, 385, 390, 395, 400, 455, 475 OPT TO ITEM 460)	E	1
-480	113T1836-4		..FRAME (ITEMS 380, 385, 390, 395, 400, 465, 480 OPT TO ITEM 470)	G	1

- Item Not Illustrated

# 57-26-31

ILLUSTRATED PARTS LIST  
 01.1 Page 1053  
 Nov 01/02